

Epigenase™ 5mC Hydroxylase TET Activity/Inhibition Assay Kit (Fluorometric)

Base Catalog # P-3087

PLEASE READ THIS ENTIRE USER GUIDE BEFORE USE

Uses: The Epigenase™ 5mC Hydroxylase TET Activity/Inhibition Assay Kit (Fluorometric) is suitable for measuring activity/inhibition of total 5mC hydroxylase TET enzyme using nuclear extracts or purified TET isoforms (TET 1-3) from a broad range of species such as mammals, plants, fungi, and bacteria, in a variety of forms including, but not limited to cultured cells, fresh and frozen tissues.

Starting Materials: Input materials can be nuclear extracts or purified TET enzymes. The amount of nuclear extracts for each assay can be 2 µg to 20 µg with optimized range of 5-10 µg. The amount of purified enzymes can be 10 ng to 500 ng, depending on the purity and catalytic activity of the enzymes.

Internal Control: The TET assay standard (hydroxymethylated DNA) is provided in this kit for the quantification of TET enzyme activity. Because TET activity can vary from tissue to tissue, and from normal and diseased states, it is advised to run replicate samples to ensure that the signal generated is validated.

Precautions: To avoid cross-contamination, carefully pipette the sample or solution into the strip wells. Use aerosol-barrier pipette tips and always change pipette tips between liquid transfers. Wear gloves throughout the entire procedure. In case of contact between gloves and sample, change gloves immediately.

KIT CONTENTS

Part 1 of 3

Component	48 Assays Cat. #P-3087-48	96 Assays Cat. #P-3087-96	Shipping Temperature	Storage Upon Receipt	Storage Checklist
WB (10X Wash Buffer)	14 ml	28 ml	Ambient	4°C	
TAB (TET Assay Buffer)	3 ml	6 ml	Ambient	RT	
BS (Binding Solution)	5 ml	10 ml	Ambient	RT	
DB (Dilution Buffer)	4 ml	8 ml	Ambient	RT	
8-Well Assay Strips (With Frame)	6	12	Ambient	4°C	

Part 2 of 3

Component	48 Assays Cat. #P-3087-48	96 Assays Cat. #P-3087-96	Shipping Temperature	Storage Upon Receipt	Storage Checklist
TS (10 X TET Substrate)*	10 µl	20 µl	Ice Pack	-20°C	
HC5 (TET Assay Standard, 20 µg/ml)*	10 µl	20 µl	Ice Pack	-20°C	
HC7 (Detection Antibody, 400 µg/ml)*	8 µl	16 µl	Ice Pack	-20°C	
HC8 (Enhancer Solution)*	8 µl	16 µl	Ice Pack	-20°C	
FD (Fluoro-Developer)*	10 µl	20 µl	Ice Pack	-20°C	

Part 3 of 3

Component	48 Assays Cat. #P-3087-48	96 Assays Cat. #P-3087-96	Shipping Temperature	Storage Upon Receipt	Storage Checklist
HC6 (Capture Antibody, 1000 µg/ml)*	4 µl	8 µl	Ice Pack	4°C	
FE (Fluoro-Enhancer)*	10 µl	20 µl	Ice Pack	4°C	
Co-factor 1*	25 µl	50 µl	Ice Pack	4°C	
Co-factor 2*	25 µl	50 µl	Ice Pack	4°C	
Co-factor 3*	25 µl	50 µl	Ice Pack	4°C	

* Spin the solution down to the bottom prior to use.

SHIPPING & STORAGE

The kit is shipped in three parts: the first part at ambient room temperature and the second and third parts on frozen ice packs at 4°C. Shipping temperature may differ from storage temperature for certain components that can tolerate such short-term differences, in order to avoid excess moisture or to optimize container dimensions.

Upon receipt: (1) Store **TS**, **HC5**, **HC7**, **HC8**, and **FD** at -20°C away from light; (2) Store **WB**, **HC6**, **FE**, **Co-factor 1**, **Co-factor 2**, **Co-factor 3**, and **8-Well Assay Strips** at 4°C away from light; (3) Store remaining components (**TAB**, **BS**, and **DB**) at room temperature away from light.

Note: Check if **WB** 10X Wash Buffer contains salt precipitates before use. If so, warm at room temperature or 37°C and shake the buffer until the salts are re-dissolved.

All components of the kit are stable for 6 months from the date of shipment, when stored properly.

MATERIALS REQUIRED BUT NOT SUPPLIED

- ☐ Adjustable pipette or multiple-channel pipette
- ☐ Multiple-channel pipette reservoirs
- ☐ Aerosol resistant pipette tips
- ☐ Fluorescence microplate reader capable of reading fluorescence at 530ex/590em nm
- ☐ 1.5 ml microcentrifuge tubes
- ☐ Incubator for 37°C incubation
- ☐ Distilled water
- ☐ Nuclear extracts or purified enzymes
- ☐ Parafilm M or aluminum foil

GENERAL PRODUCT INFORMATION

Quality Control: Each lot of Epigenase™ 5mC Hydroxylase TET Activity/Inhibition Assay Kit (Fluorometric) is tested against predetermined specifications to ensure consistent product quality. EpigenTek guarantees the performance of all products in the manner described in our product instructions.

Product Warranty: If this product does not meet your expectations, simply contact our technical support unit or your regional distributor. We also encourage you to contact us if you have any suggestions about product performance or new applications and techniques.

Safety: Suitable lab coat, disposable gloves, and proper eye protection are required when working with this product.

Product Updates: EpigenTek reserves the right to change or modify any product to enhance its performance and design. The information in this User Guide is subject to change at any time without notice. Be sure to use the latest User Guide for this kit which can be accessed online at www.epigenetek.com/datasheet.

Usage Limitation: The Epigenase™ 5mC Hydroxylase TET Activity/Inhibition Assay Kit (Fluorometric) is for research use only and is not intended for diagnostic or therapeutic application.

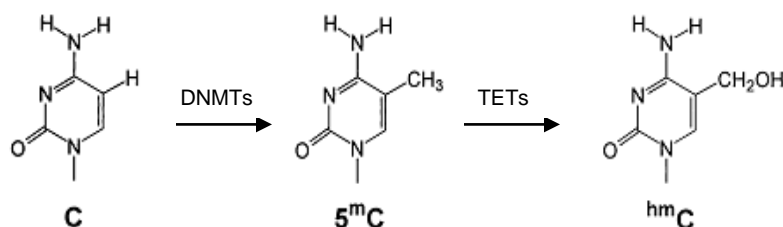
Intellectual Property: The Epigenase™ 5mC Hydroxylase TET Activity/Inhibition Assay Kit (Fluorometric) and methods of use contain proprietary technologies by EpigenTek.

A BRIEF OVERVIEW

DNA methylation occurs by the covalent addition of a methyl group at the 5-carbon of the cytosine ring by DNA methyltransferases, resulting in 5-methylcytosine (5mC). In somatic cells, 5mC is found almost exclusively in the context of paired symmetrical methylation of the dinucleotide CpG, whereas in

embryonic stem (ES) cells, a substantial amount of 5mC is also observed in non-CpG contexts. The biological importance of 5mC as a major epigenetic modification in phenotype and gene expression has been recognized widely.

5-hydroxymethylcytosine (5hmC), as a sixth DNA base with functions in transcription regulation, has been detected to be abundant in human and mouse brain and embryonic stem (ES) cells. In mammals, it can be generated by oxidation of 5mC, a reaction mediated by the ten-eleven translocation (TET) family of 5mC-hydroxylases.



Unmethylated DNA

T-C-G-T-C-G-A-C-G

Methylated DNA

T-^mC-G-T-^mC-G-A-^mC-G

Hydroxymethylated DNA

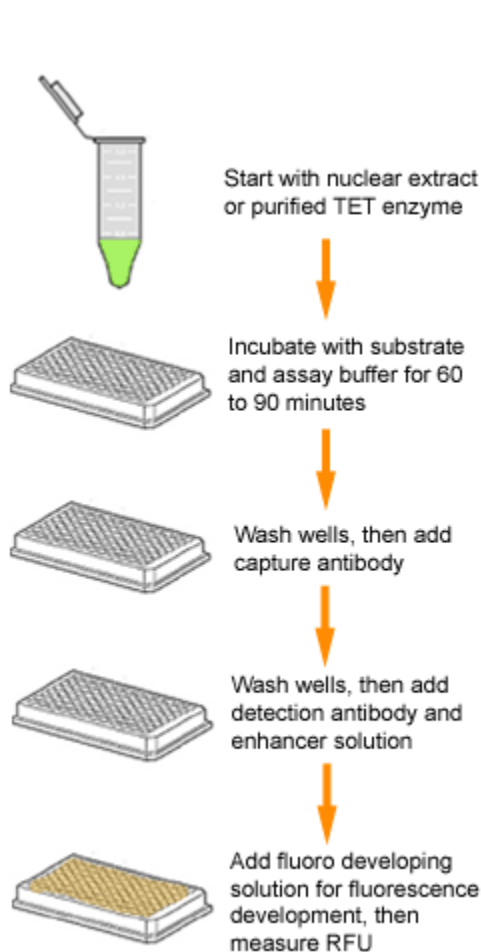
T-^{hm}C-G-T-^{hm}C-G-A-^{hm}C-G

The TET family of 5mC hydroxylases includes TET1, TET2 and TET3. These TET proteins may promote DNA demethylation by binding to CpG-rich regions to prevent unwanted DNA methyltransferase activity, and by converting 5mC to 5hmC and further to 5-carboxylcytosine (5-caC) through hydroxylase activity. It was shown that genomic 5hmC level correlates to TET hydroxylase activity. In addition, TET1 was shown to have dual functions in transcription activation and repression by binding different target genes in ES cells. TET1 is also a fusion partner of the MLL gene in acute myeloid leukemia and is considered an oncoprotein. TET2 is found to be frequently mutated in leukemia and considered to act as tumor suppressor. TET3 has been demonstrated to play a unique role for DNA methylation reprogramming processes in the mammalian zygote. Thus, activating tumor suppressor TET enzymes such as TET2 or inhibiting oncoprotein TET enzymes such as TET1 would be important in benefiting cancer diagnostics and developing new target-based cancer therapeutics. However, there are few methods available for detecting TET hydroxylase activity/inhibition using both nuclear extracts and purified enzymes. To address this issue, EpigenTek developed and offers Epigenase™ 5mC Hydroxylase TET Activity/Inhibition Assay Kit (Fluorometric). The kit has the following advantages and features:

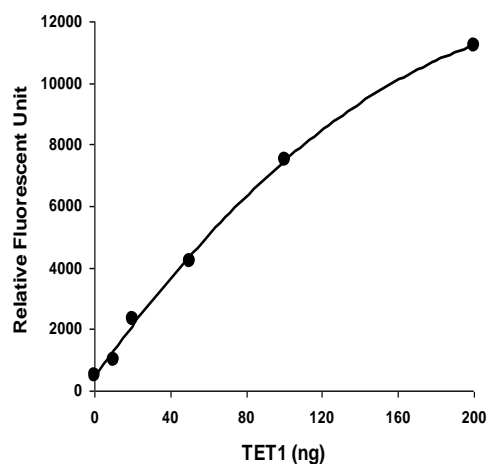
- 5-hour fluorometric assay procedure with easy-to-follow steps for convenience and speed. The entire procedure can be finished within 5 hours.
- Directly measures TET hydroxylase activity via a straightforward detection of TET-converted hydroxymethylated products.
- Innovative kit composition enables background signals to be extremely low and allows the assay to be simple, accurate, reliable, and consistent.
- Either cell/tissue extracts or purified TET proteins can be used, which allows for detection of inhibitory effects of TET hydroxylase inhibitors in vivo and in vitro.
- Novel assay principle allows high sensitivity to be achieved. The activity can be detected from as low as 10 ng of purified TET1 hydroxylase.
- A hydroxymethylated standard is included, which allows the specific activity of TET hydroxylases to be quantified.
- Strip microplate format makes the assay flexible for manual or high throughput analysis (96 assays).

PRINCIPLE & PROCEDURE

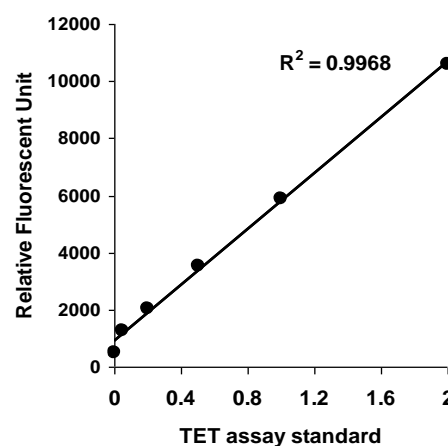
In this assay, a methylated substrate is stably coated onto the microplate wells. Active TETs (not included) bind to the substrate and convert methylated substrate hydroxymethylated products from the substrate. The TET-converted hydroxymethylated products can be recognized with a specific antibody. The ratio or amount of hydroxymethylated products, which is proportional to enzyme activity, can then be fluorometrically measured by reading the fluorescence in a fluorescent microplate reader at 530 excitation and 590 emission. The activity of the TET enzyme is in turn proportional to the relative fluorescent units measured.



Schematic procedure of the of Epigenase™ 5mC Hydroxylase TET Activity/Inhibition Assay Kit (Fluorometric)



Demonstration of high sensitivity and specificity of the TET1 activity/inhibition assay achieved by using recombinant TET1 with the Epigenase™ 5mC Hydroxylase TET Activity/Inhibition Assay Kit (Fluorometric).



Illustrated standard curve generated with TET assay standard.

ASSAY PROTOCOL

For the best results, please read the protocol in its entirety prior to starting your experiment.

Starting Materials

Input Amount: The amount of nuclear extracts for each assay can be 2 µg to 20 µg with an optimal range of 5-10 µg. The amount of purified enzymes can be 10 ng to 500 ng, depending on the purity and catalytic activity of the enzymes.

Nuclear Extraction: You can use your method of choice for preparing nuclear extracts. EpigenTek offers a nuclear extraction kit (Cat # OP-0002) optimized for use with this kit.

Nuclear Extract or Purified TET protein Storage: Nuclear extract or purified TET enzyme should be stored in aliquots at -80°C until use.

1. Buffer Solution & Preparation

- a. Prepare **Diluted WB** 1X Wash Buffer:

48-Assay Kit: Add 13 ml of **WB** (10X Wash Buffer) to 117 ml of distilled water and adjust pH to 7.2-7.5.

96-Assay Kit: Add 26 ml of **WB** (10X Wash Buffer) to 234 ml of distilled water and adjust pH to 7.2-7.5.

This **Diluted WB** 1X Wash Buffer can now be stored at 4°C for up to six months.

- b. Prepare **Final TAB**:

Add **Co-Factor 1**, **Co-Factor 2**, and **Co-Factor 3** to **TAB** at a ratio of 1:100 (i.e., add 1 µl of each **Co-Factor** to 100 µl of **TAB** for a total of 103 µl). About 50 µl of **Final TAB** will be required for each assay well.

- c. Prepare **0.5X TS** TET Substrate:

Add 1 µl of **TS** 10X TET Substrate to 19 µl of **TAB**. About 2 µl of **0.5X TS** will be required for each assay well.

- d. Prepare **Diluted HC6** Capture Antibody Solution:

Dilute **HC6** Capture Antibody with **Diluted WB** 1X Wash Buffer at a ratio of 1:1000 (i.e., add 1 µl of **HC6** to 1000 µl of **Diluted WB** 1X Wash Buffer). About 50 µl of **Diluted HC6** will be required for each assay well.

- e. Prepare **Diluted HC7** Detection Antibody Solution:

Dilute **HC7** Detection Antibody with **Diluted WB** 1X Wash Buffer at a ratio of 1:2000 (i.e., add 1 µl of **HC7** to 2000 µl of **Diluted WB** 1X Wash Buffer). About 50 µl of **Diluted HC7** will be required for each assay well.

- f. Prepare **Diluted HC8** Enhancer Solution:

Dilute **HC8** Enhancer Solution with **Diluted WB** 1X Wash Buffer at a ratio of 1:5000 (i.e., add 1 µl of **HC8** to 5000 µl of **Diluted WB** 1X Wash Buffer). About 50 µl of **Diluted HC8** will be required for each assay well.

- g. Prepare **Diluted HC5** Standard Solution:

Suggested Standard Curve Preparation: First, dilute **HC5** with **TAB** to 2 ng/μl by adding 1 μl of **HC5** to 9 μl of **TAB**. Then, further prepare five concentrations by combining the 2 ng/μl **Diluted HC5** with **TAB** into final concentrations of 0.05, 0.2, 0.5, 1.0, and 2.0 ng/μl according to the following dilution chart:

Tube	HC5 (2 ng/μl)	TAB	Resulting HC5 Concentration
1	1.0 μl	39.0 μl	0.05 ng/μl
2	1.0 μl	9.0 μl	0.2 ng/μl
3	1.0 μl	3.0 μl	0.5 ng/μl
4	2.0 μl	2.0 μl	1.0 ng/μl
5	4.0 μl	0.0 μl	2.0 ng/μl

- h. Prepare **Fluorescence Development Solution:**

Add 1 μl of **FD** Fluoro Developer and 1 μl of **FE** Fluoro Enhancer to every 500 μl of **DB** Dilution Buffer. About 50 μl of **Fluorescence Development Solution** will be required for each well to be developed.

Note: Keep each of diluted solutions except **Diluted WB** 1X Wash Buffer on ice until use. Any remaining diluted solutions other than **Diluted WB** should be discarded if not used within the same day.

2. Enzymatic Reaction

- Predetermine the number of strip wells required for your experiment. Carefully remove un-needed strip wells from the plate frame and place them back in the bag (seal the bag tightly and store at 4°C).
- Add 80 μl of **BS** Binding Solution to each well.
- Add 2 μl of **0.5X TS** into each blank well and each sample well. Add 1 μl of **Diluted HC5** into the standard curve wells (see the designated wells depicted in Table 1 under "Suggested Strip Well Setup" below). Mix solution by gently tilting from side to side or shaking the plate several times. Ensure the solution coats the bottom of the well evenly.

Note: For the standard curve, add 1 μl of **Diluted HC5** at concentrations of 0.05 to 2 ng/μl (see the chart in Step 1g). The final concentrations should be 0.05, 0.2, 0.5, 1, and 2 ng per well.

- Cover strip plate with plate seal or Parafilm M and incubate at 37°C for 90 min.
- Remove the **BS** Binding Solution from each well.
- Wash each well three times with 150 μl of the **Diluted WB** 1X Wash Buffer each time.
- Blank Wells: Add 50 μl of **Final TAB** to each blank well.
- Standard Wells: Add 50 μl of **Final TAB** to each standard well.
- Sample Wells Without Inhibitor: Add 46 to 49 μl of **Final TAB** and 1 to 4 μl of nuclear extracts or purified TET enzyme to each sample well without inhibitor. Total volume should be 50 μl per well.
- Sample Wells With Inhibitor: Add 41 to 44 μl of **Final TAB**, 1 to 4 μl of nuclear extracts or purified TET enzyme, and 5 μl of inhibitor solution. Total volume should be 50 μl per well.

Note: (1) Follow the suggested well setup diagrams under “Suggested Strip Well Setup”; (2) It is recommended to use 5 µg to 10 µg of nuclear extract per well or 50 ng to 500 ng of purified enzyme per well; (3) The concentration of inhibitor to be added into the sample wells can be varied (1 µM to 1000 µM). However, the final concentration of the inhibitors before adding to the wells should be prepared with **TAB** at a 1:10 ratio (i.e., add 0.5 µl of inhibitor to 4.5 µl of **TAB**) so that the original solvent of the inhibitor can be reduced to 1% of the reaction solution or less.

- k. Tightly cover strip plate with Parafilm M to avoid evaporation and incubate at 37°C for 60-90 min.

Note: (1) The incubation time may depend on intrinsic TET activity. However, in general, 60 min incubation is suitable for active purified TET enzyme and 90 min incubation is required for nuclear extract.

- l. Remove the reaction solution from each well. Wash each well three times with 150 µl of the **Diluted WB** 1X Wash Buffer each time.

3. Antibody Binding & Signal Enhancing

- a. Add 50 µl of the **Diluted HC6** to each well, then cover Parafilm M or aluminium foil and incubate at room temperature for 60 min.
- b. Remove the **Diluted HC6** solution from each well.
- c. Wash each well three times with 150 µl of the **Diluted WB** 1X Wash Buffer each time.
- d. Add 50 µl of the **Diluted HC7** to each well, then cover with Parafilm M or aluminium foil and incubate at room temperature for 30 min.
- e. Remove the **Diluted HC7** solution from each well.
- f. Wash each well four times with 150 µl of the **Diluted WB** 1X Wash Buffer each time.
- g. Add 50 µl of the **Diluted HC8** to each well, then cover with Parafilm M or aluminum foil and incubate at room temperature for 30 min.
- h. Remove the **Diluted HC8** solution from each well.
- i. Wash each well five times with 150 µl of the **Diluted WB** 1X Wash Buffer each time.

Note: Ensure any residual wash buffer in the wells is thoroughly removed at each wash step. The wash can be carried out by simply pipetting the wash buffer into the wells and then pipetting the buffer out from the wells (discard the buffer).

4. Signal Detection

- a. Add 50 µl of Fluorescence Development Solution to each well and incubate at room temperature. Continue to monitor the development (approximately 2-4 minutes) until the Fluorescence Development Solution turns pink in the presence of sufficient demethylated products.
- b. Read the fluorescence on a fluorescence microplate reader within 2 to 10 min at 530ex/590em nm.

Note: If the stripwell microplate frame does not fit in the microplate reader, transfer the solution to a standard 96-well microplate.

5. TET Activity Calculation

- Calculate the average duplicate readings for sample wells and blank wells.
- Calculate TET activity or inhibition using the following formulas:

For simple calculation:

$$\text{TET Activity (RFU/min/mg)} = \frac{(\text{Sample RFU} - \text{Blank RFU})}{(\text{Protein Amount } (\mu\text{g}) * \text{min}^{**})} \times 1000$$

* Protein amount added into the reaction at step 2i.

** Incubation time at step 2k (in minutes).

Example calculation:

Average RFU of sample is 6800

Average RFU of blank is 800

Protein amount is 5 μg

Incubation time is 1 hour (60 min)

$$\text{TET activity} = \frac{(6800 - 800)}{(5 \times 60)} \times 1000 = 20000 \text{ RFU/min/mg}$$

For accurate or specific activity calculation:

First, generate a standard curve and plot the RFU values against the amount of **HC5** at each concentration point. Then determine the slope as RFU/ng using linear regression (*Microsoft Excel's* linear regression or slope functions are suitable for such calculation) and the most linear part (include at least 4 concentration points) of the standard curve for optimal slope calculation. then calculate the amount of **HC5**-converted hydroxymethylated product using the following formulas:

$$\text{Hydroxymethylated product (ng)} = \frac{(\text{Sample RFU} - \text{Blank RFU})}{\text{Slope}}$$

$$\text{TET Activity (ng/min/mg)} = \frac{\text{Hydroxymethylated Product (ng)}}{(\text{Protein Amount } (\mu\text{g}) * \text{min}^{**})} \times 1000$$

* Protein amount added into the reaction at step 2i.

** Incubation time at step 2k (in minutes).

For inhibition calculation:

$$\text{Inhibition \%} = \left[1 - \frac{\text{Inhibitor Sample RFU} - \text{Blank RFU}}{\text{No Inhibitor Sample RFU} - \text{Blank RFU}} \right] \times 100\%$$

SUGGESTED STRIP WELL SETUP

Table 1. The suggested strip-well plate setup for standard curve preparation in a 48-assay format (in a 96-assay format, Strips 7 to 12 can be configured as Sample). The controls and samples can be measured in duplicate.

Well #	Strip 1	Strip 2	Strip 3	Strip 4	Strip 5	Strip 6
A	Blank	Blank	Sample	Sample	Sample	Sample
B	HC5 0.05 ng/μl	HC5 0.05 ng/μl	Sample	Sample	Sample	Sample
C	HC5 0.2 ng/μl	HC5 0.2 ng/μl	Sample	Sample	Sample	Sample
D	HC5 0.5 ng/μl	HC5 0.5 ng/μl	Sample	Sample	Sample	Sample
E	HC5 1 ng/μl	HC5 1 ng/μl	Sample	Sample	Sample	Sample
F	HC5 2 ng/μl	HC5 2 ng/μl	Sample	Sample	Sample	Sample
G	Sample	Sample	Sample	Sample	Sample	Sample
H	Sample	Sample	Sample	Sample	Sample	Sample

TROUBLESHOOTING

Problem	Possible Cause	Suggestion
No signal or weak signal in both the standard and sample wells	Reagents are added incorrectly.	Check if reagents are added in the proper order with the right amount, and if any steps in the protocol may have been omitted by mistake.
	The substrate and standard are not properly bound to the wells.	Ensure that (1) the TS and HC5 are added into the wells; (2) the wells are completely covered with sufficient BS Binding Solution; and (3) binding time is sufficient (90 min).
	Incubation time and temperature are incorrect.	Ensure the incubation time and temperature described in the protocol are followed correctly.
	Incorrect fluorescence reading.	Check if the appropriate fluorescence filters (530ex/590em nm filter) are used.
	Kit was not stored or handled properly.	Ensure all components of the kit were stored at the appropriate temperatures and the cap is tightly capped after each opening or use.
No signal or weak signal in only the standard curve wells	The standard amount is insufficiently added to the well in Step 2c.	Ensure a sufficient amount of standard is added.
	The standard is degraded due to improper storage conditions.	Follow the Shipping & Storage guidance of this User Guide for storage of HC5 (TET Assay Standard).

High background present in the blank wells	Insufficient washing of wells.	Check if washing at each step is performed according to the protocol.
	Contaminated by sample or standard.	Ensure the well is not contaminated from adding sample or standard accidentally or from using contaminated tips.
	Incubation time with detection antibody is too long.	The incubation time at Step 3d should not exceed 45 minutes.
	Over development of fluorescence.	Decrease the development time in Step 4a.
No signal or weak signal only in sample wells	Protein sample is not properly extracted or purified.	Ensure your protocol is suitable for TET protein extraction. For the best results, it is advised to use EpigenTek's Nuclear Extraction Kit (Cat. No. OP-0002). Also, use fresh cells or tissues for protein extraction, as frozen cells or tissues could lose enzyme activity.
	Sample amount added into the wells is insufficient.	Ensure a sufficient amount of purified enzymes or nuclear extracts is used as indicated in Steps 2i and 2j. The sample can be titrated to determine the optimal amount to use in the assay.
	Sample was not stored properly or has been stored for too long.	Ensure sample is stored in aliquots at -80°C , with no more than 6 weeks for nuclear extracts and 6 months for purified enzymes. Avoid repeated freezing/thawing.
	Little or no activity of TET contained in the sample.	This problem may be a result of many factors. If the affecting factors cannot be determined, use new or re-prepared nuclear extracts or purified enzymes.
Uneven fluorescent development	Insufficient wash of the wells.	Ensure the wells are washed according to the guidance of washing and residue washing buffer is removed as much as possible.
	Delayed fluorescent development in the wells.	Ensure fluorescence development solution is added sequentially and consistent with the order you added the other reagents (e.g., from well A to G or from well 1 to 12).

RELATED PRODUCTS

Nuclear Extract Preparation

OP-0002-1 EpiQuik™ Nuclear Extraction Kit

DNA Hydroxymethylation

P-1036 MethylFlash™ Hydroxymethylated DNA Quantification Kit (Colorimetric)
 P-1037 MethylFlash™ Hydroxymethylated DNA Quantification Kit (Fluorometric)
 P-1038 EpiQuik™ Hydroxymethylated DNA Immunoprecipitation (hMeDIP) Ki
 P-3086 Epigenase™ 5mC-Hydroxylase TET Activity/Inhibition Kit (Colorimetric)