
ACVR2B Recombinant Monoclonal Antibody [7B10]

(Catalog #A74519)

Background

Transmembrane kinase, part of activin receptor complex with type-1 receptors. Transmits activin signals from cell surface, impacting processes like neuronal differentiation, hair follicle development, wound healing, and more. In complex, type-2 receptors bind activin and phosphorylate type-1 receptors. Activated type-1 receptors phosphorylate SMAD proteins, which form a complex that enters the nucleus, mediating activin-induced transcription. Inhibitory SMAD7 and inhibin-B modulate this pathway.

Description

ACVR2B Recombinant Monoclonal Antibody [7B10]. Unconjugated. Raised in: HEK293F Cell.

Formulation

Buffer: Rabbit IgG in phosphate buffered saline, pH 7.4, 150mM NaCl, 0.02% sodium azide and 50% glycerol.

Specificity

Human

Isotype

Rabbit IgG

Uniprot ID

Q13705

Purification

Affinity Chromatography

Immunogen

A synthesized peptide derived from human Activin Receptor Type IIB

Storage

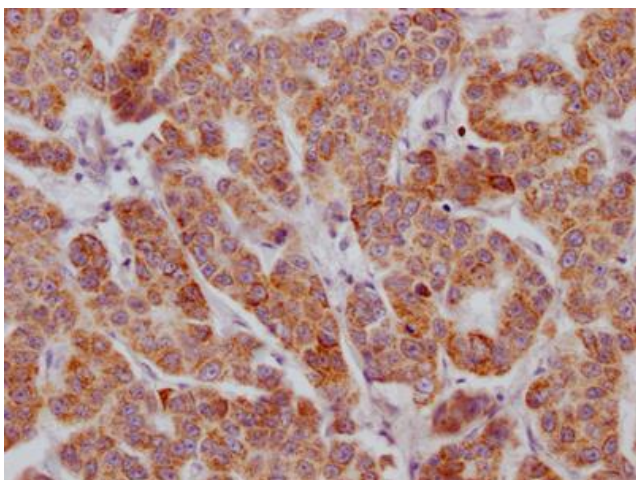
Upon receipt, store at -20°C or -80°C. Avoid repeated freeze.

Alternative Names

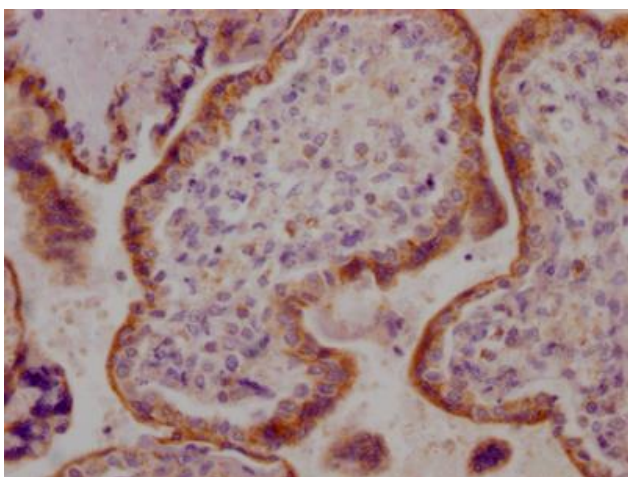
Activin receptor type-2B (EC 2.7.11.30) (Activin receptor type IIB) (ACTR-IIB), ACVR2B

Application

ELISA, IHC; Recommended dilution: IHC:1:50-1:200



IHC image of ACVR2B rMAb diluted at 1:100 and staining in paraffin-embedded human breast cancer performed on a Leica Bond™ system. After dewaxing and hydration, antigen retrieval was mediated by high pressure in a citrate buffer (pH 6.0). Section was blocked with 10% normal goat serum 30min at RT. Then primary antibody (1% BSA) was incubated at 4°C overnight. The primary is detected by a Goat anti-rabbit IgG polymer labeled by HRP and visualized using 0.05% DAB.



IHC image of ACVR2B rMAb diluted at 1:100 and staining in paraffin-embedded human placenta tissue performed on a Leica Bond™ system. After dewaxing and hydration, antigen retrieval was mediated by high pressure in a citrate buffer (pH 6.0). Section was blocked with 10% normal goat serum 30min at RT. Then primary antibody (1% BSA) was incubated at 4°C overnight. The primary is detected by a Goat anti-rabbit IgG polymer labeled by HRP and visualized using 0.05% DAB.