

---

## Phospho ATF2 (T71) Recombinant Monoclonal Antibody [4F2]

(Catalog # A73767)

---

### Background

This gene encodes a transcription factor that is a member of the leucine zipper family of DNA binding proteins. The encoded protein has been identified as a moonlighting protein based on its ability to perform mechanistically distinct functions. This protein binds to the cAMP-responsive element (CRE), an octameric palindrome. It forms a homodimer or a heterodimer with c-Jun and stimulates CRE-dependent transcription. This protein is also a histone acetyltransferase (HAT) that specifically acetylates histones H2B and H4 in vitro; thus it may represent a class of sequence-specific factors that activate transcription by direct effects on chromatin components. The encoded protein may also be involved in cell's DNA damage response independent of its role in transcriptional regulation. Several alternatively spliced transcript variants have been found for this gene.

### Description

Phospho ATF2 (T71) Recombinant Monoclonal Antibody [4F2]. Unconjugated. Raised in: HEK293F Cell.

### Formulation

Buffer: Rabbit IgG in phosphate buffered saline, pH 7.4, 150mM NaCl, 0.02% sodium azide and 50% glycerol.

### Specificity

Human

### Isotype

Rabbit IgG

### Uniprot ID

P15336

### Purification

Affinity Chromatography

### Immunogen

A synthesized peptide derived from human Phospho-ATF2 (T71)

### Storage

Upon receipt, store at -20°C or -80°C. Avoid repeated freeze.

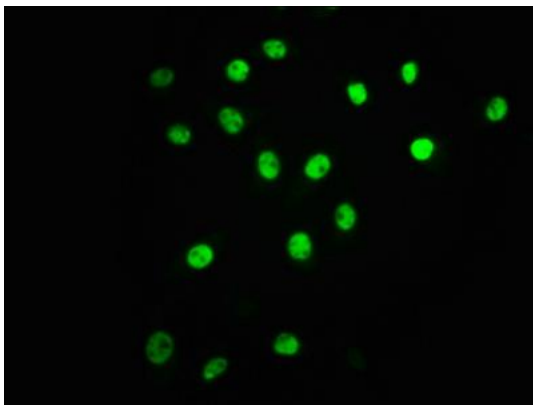
### Alternative Names

Cyclic AMP-dependent transcription factor ATF-2, Activating transcription factor 2, Cyclic AMP-responsive element-binding protein 2, CREB-2, cAMP-responsive element-binding protein 2, HB16, Histone acetyltransferase ATF2, cAMP response element-binding protein CRE-BP1, ATF2, CREB2, CREBP1

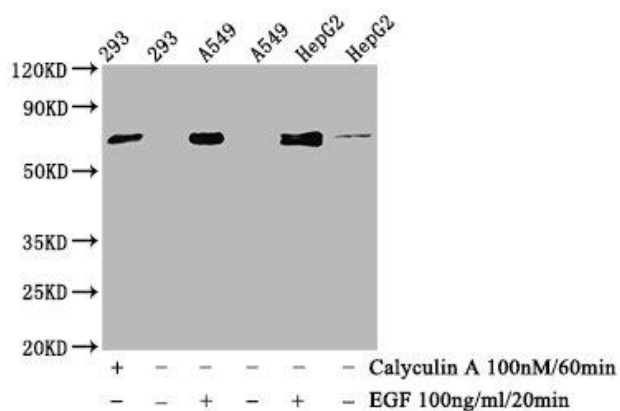
### Application

ELISA, WB, IF; Recommended dilution: WB:1:500-1:5000, IF:1:20-1:200

---



Immunofluorescence staining of A549 cells(treated with 100mM EGF for 20min) with p-ATF2 (T71) rMAb at 1:63,counter-stained with DAPI. The cells were fixed in 4% formaldehyde, permeabilized using 0.2% Triton X-100 and blocked in 10% normal Goat Serum. The cells were then incubated with the antibody overnight at 4°C. The secondary antibody was Alexa Fluor 488-conjugated AffiniPure Goat Anti-Rabbit IgG (H+L).



#### Western Blot

Positive WB detected in 293 whole cell lysate,A549 whole cell lysate,HepG2 whole cell lysate(treated with Calyculin A or EGF)

All lanes Phospho-ATF2 antibody at 1.015ug/ml

Secondary

Goat polyclonal to rabbit IgG at 1/50000 dilution

Predicted band size: 70 KDa

Observed band size: 70 KDa