

ACE2 Monoclonal Antibody

(Catalog A73665)

Background

The protein encoded by this gene belongs to the angiotensin-converting enzyme family of dipeptidyl carboxydipeptidases and has considerable homology to human angiotensin 1 converting enzyme. This secreted protein catalyzes the cleavage of angiotensin I into angiotensin 1-9, and angiotensin II into the vasodilator angiotensin 1-7. The organ- and cell-specific expression of this gene suggests that it may play a role in the regulation of cardiovascular and renal function, as well as fertility. In addition, the encoded protein is a functional receptor for the spike glycoprotein of the human coronaviruses SARS and HCoV-NL63.

Description

ACE2 Monoclonal Antibody. Unconjugated. Raised in: Rabbit.

Formulation

Buffer: PBS with 0.02% sodium azide, 0.05% BSA*, 50% glycerol, pH7.3.

Specificity

Human, Mouse, Rat

Isotype

IgG

Uniprot ID

Q9BYF1

Purification

Affinity Purified

Immunogen

Recombinant fusion protein containing a sequence corresponding to amino acids 18-740 of human ACE2 (NP_068576.1).

Storage

Shipped at 4°C. Upon receipt, store at -20°C. Avoid repeated freeze.

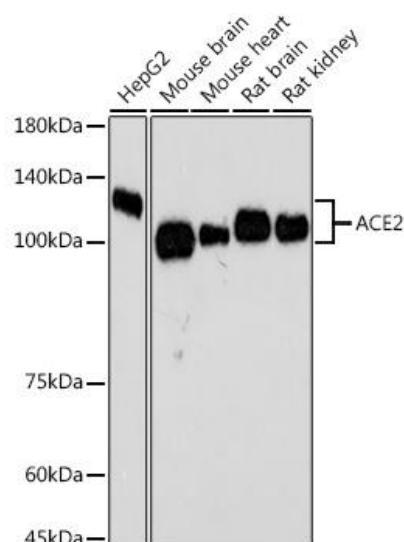
Alternative Names

ACE2, ACEH, angiotensin I converting enzyme 2, ACE2, angiotensin I converting enzyme 2, angiotensin-converting enzyme 2; ACE-related carboxypeptidase; angiotensin I converting enzyme (peptidyl-dipeptidase A) 2; angiotensin-converting enzyme homolog; metalloprotease MPROT15; peptidyl-dipeptidase A

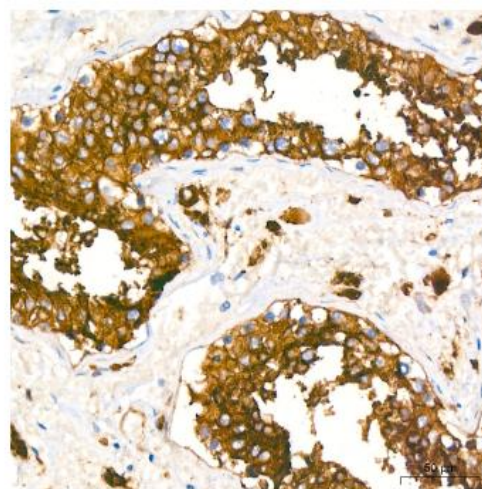
Application

WB, IHC-P, IF/ICC, ELISA; Recommended Dilutions: WB 1:100 - 1:500, IHC-P 1:50 - 1:200, IF/ICC 1:50 - 1:200

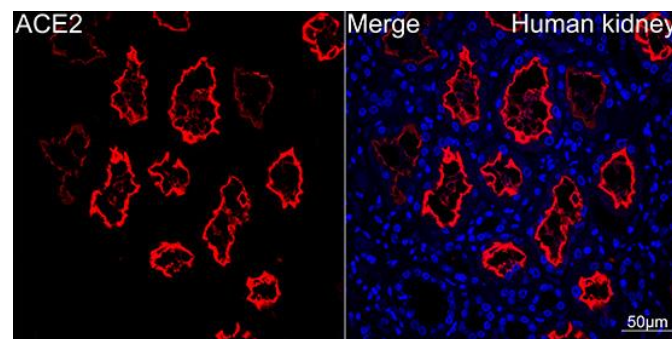
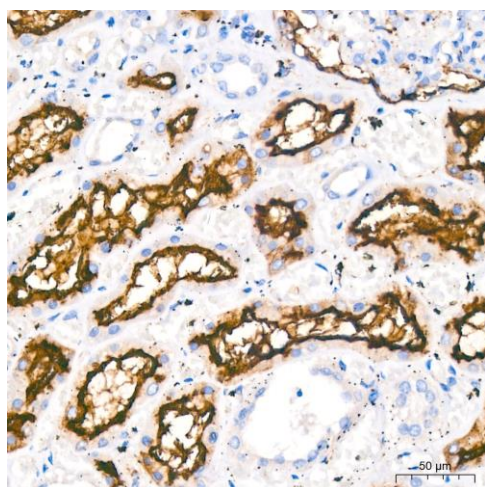
**The BSA contained in this antibody is exempt from the requirement of certification by an authoritative body. This exemption is due to the comprehensive purification process, which ensures the complete absence of viable microorganisms, the BSA's sourcing from aseptically collected serum in the USA, and its subsequent sterile filtration and lyophilization. Additionally, as all BSA-containing products are strictly intended for research purposes and not for diagnostic or therapeutic use, they are not subject to certification authority oversight.*



Western blot analysis of various lysates using ACE2 Monoclonal Antibody at 1:500 dilution.
 Secondary antibody: HRP Goat Anti-Rabbit IgG (H+L) at 1:10000 dilution.
 Lysates/proteins: 25µg per lane.
 Blocking buffer: 3% nonfat dry milk in TBST.



Immunohistochemistry analysis of paraffin-embedded Human testis using ACE2 Monoclonal Antibody at dilution of 1:200 (40x lens). Perform high pressure antigen retrieval with 10 mM citrate buffer pH 6.0 before commencing with IHC staining protocol.



Confocal imaging of Human kidney using ACE2 Monoclonal Antibody (dilution 1:100) (Red). DAPI was used for nuclear staining (blue). Objective: 40x.

Immunohistochemistry analysis of paraffin-embedded Human kidney using ACE2 Monoclonal Antibody at dilution of 1:200 (40x lens). Perform high pressure antigen retrieval with 10 mM citrate buffer pH 6.0 before commencing with IHC staining protocol.