
CCS Polyclonal Antibody

(Catalog #A72946)

Background

Copper chaperone for superoxide dismutase specifically delivers Cu to copper/zinc superoxide dismutase and may activate copper/zinc superoxide dismutase through direct insertion of the Cu cofactor.

Description

CCS Polyclonal Antibody. Unconjugated. Raised in: Rabbit.

Formulation

Buffer: PBS with 0.01% thimerosal, 50% glycerol, pH7.3.

Specificity

Human

Isotype

IgG

Uniprot ID

O14618

Purification

Affinity Purification

Immunogen

Recombinant fusion protein containing a sequence corresponding to amino acids 1-274 of human CCS (NP_005116.1).

Storage

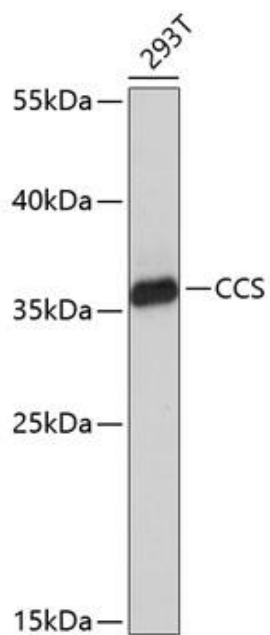
Shipped at 4°C. Upon receipt, store at -20°C. Avoid freeze / thaw cycles

Alternative Names

CCS; copper chaperone for superoxide dismutase

Application

ELISA, WB; Recommended dilution: WB 1:500 - 1:2000



Western blot analysis of extracts of 293T cells, using CCS Polyclonal Antibody at 1:1000 dilution.
Secondary antibody: HRP Goat Anti-Rabbit IgG (H+L) at 1:10000 dilution.
Lysates/proteins: 25ug per lane.
Blocking buffer: 3% nonfat dry milk in TBST.
Exposure time: 30s.