

CD34 Polyclonal Antibody

(Catalog # A72914)

Background

The protein encoded by this gene may play a role in the attachment of stem cells to the bone marrow extracellular matrix or to stromal cells. This single-pass membrane protein is highly glycosylated and phosphorylated by protein kinase C. Two transcript variants encoding different isoforms have been found for this gene.

Description

CD34 Polyclonal Antibody. Unconjugated. Raised in: Rabbit.

Formulation

Buffer: PBS with 0.02% sodium azide, 50% glycerol, pH7.3.

Specificity

Human, Mouse, Rat

Isotype

IgG

Uniprot ID

P28906

Purification

Affinity Purification

Immunogen

A synthetic peptide corresponding to a sequence within amino acids 300 to the C-terminus of human CD34 (NP_001020280.1).

Storage

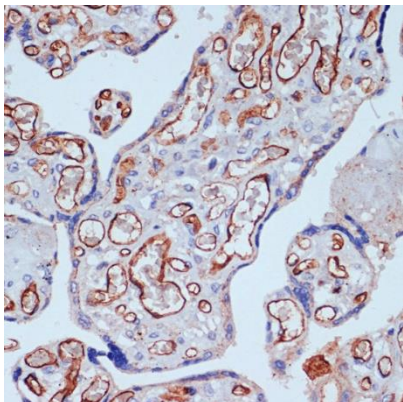
Shipped at 4°C. Upon receipt, store at -20°C. Avoid freeze / thaw cycles

Alternative Names

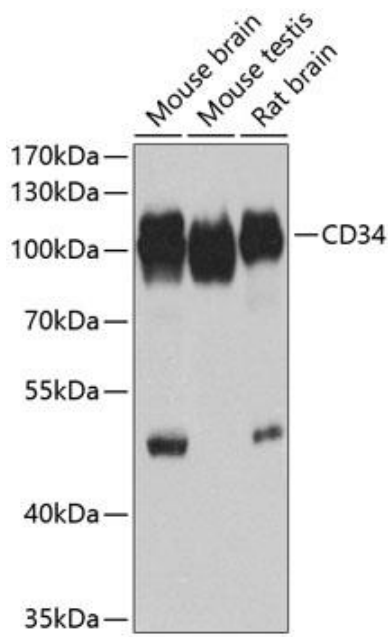
CD34; CD34 molecule

Application

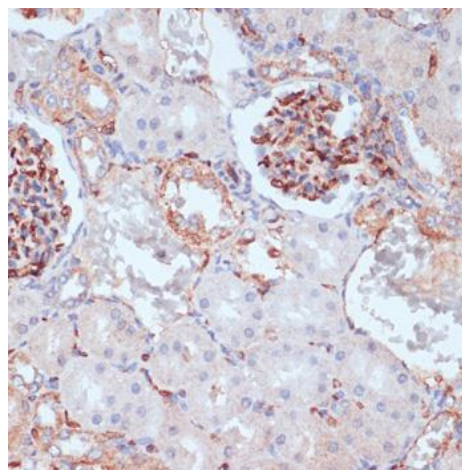
WB, IHC, IF; Recommended dilution: WB 1:500 - 1:2000, IHC 1:50 - 1:200, IF 1:50 - 1:200



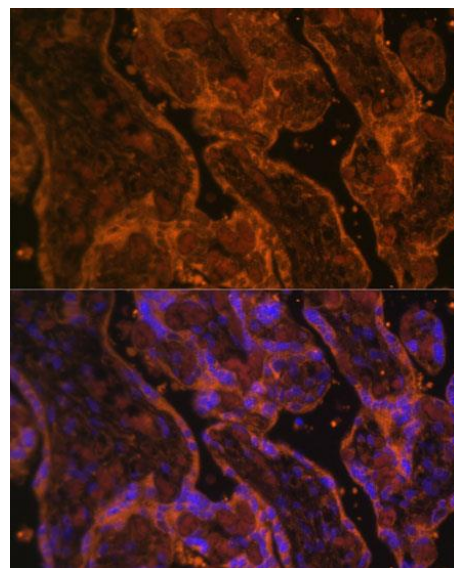
Immunohistochemistry of paraffin-embedded human placenta using CD34 Polyclonal Antibody at dilution of 1:100 (40x lens).



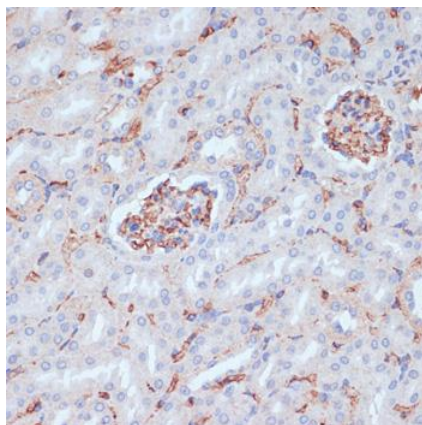
Western blot analysis of extracts of various cell lines, using CD34 Polyclonal Antibody at 1:1000 dilution.
 Secondary Antibody: HRP Goat Anti-Rabbit IgG (H+L) at 1:10000 dilution.
 Lysates/proteins: 25ug per lane.
 Blocking buffer: 3% nonfat dry milk in TBST.
 Exposure time: 45s.



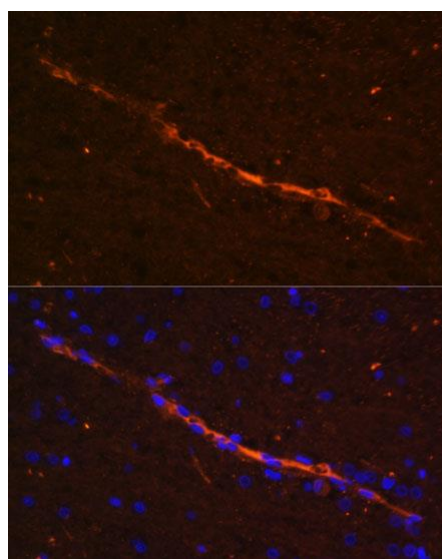
Immunohistochemistry of paraffin-embedded rat kidney using CD34 Polyclonal Antibody at dilution of 1:100 (40x lens).



Immunofluorescence analysis of human placenta using CD34 Polyclonal Antibody at dilution of 1:100. Blue: DAPI for nuclear staining.



Immunohistochemistry of paraffin-embedded mouse kidney using CD34 Polyclonal Antibody at dilution of 1:100 (40x lens).



Immunofluorescence analysis of rat brain using CD34 Polyclonal Antibody at dilution of 1:100. Blue: DAPI for nuclear staining.