

SEC22B Polyclonal Antibody

(Catalog # A72549)

Background

The protein encoded by this gene is a member of the SEC22 family of vesicle trafficking proteins. It seems to complex with SNARE and it is thought to play a role in the ER-Golgi protein trafficking. This protein has strong similarity to Mus musculus and Cricetulus griseus proteins.

Description

SEC22B Polyclonal Antibody. Unconjugated. Raised in: Rabbit.

Formulation

Buffer: PBS with 0.02% sodium azide, 50% glycerol, pH7.3.

Specificity

Human, Mouse

Isotype

IgG

Uniprot ID

O75396

Purification

Affinity Purification

Immunogen

Recombinant fusion protein containing a sequence corresponding to amino acids 85-195 of human SEC22B (NP_004883.3).

Storage

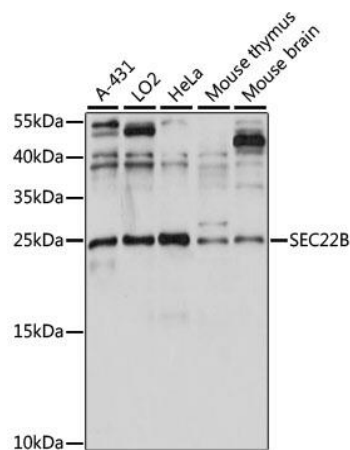
Shipped at 4°C. Upon receipt, store at -20°C. Avoid freeze / thaw cycles

Alternative Names

SEC22B; ERS-24; SEC22L1; vesicle-trafficking protein SEC22b

Application

WB; Recommended dilution: WB 1:200 - 1:2000



Western blot analysis of extracts of various cell lines, using SEC22B Polyclonal Antibody at 1:1000 dilution. Secondary Antibody: HRP Goat Anti-Rabbit IgG (H+L) at 1:10000 dilution. Lysates/proteins: 25ug per lane. Blocking buffer: 3% nonfat dry milk in TBST. Exposure time: 60s.