
Phospho-DRP1-S637 Polyclonal Antibody

(Catalog # A72400)

Background

This gene encodes a member of the dynamin superfamily of GTPases. The encoded protein mediates mitochondrial and peroxisomal division, and is involved in developmentally regulated apoptosis and programmed necrosis. Dysfunction of this gene is implicated in several neurological disorders, including Alzheimer's disease. Mutations in this gene are associated with the autosomal dominant disorder, encephalopathy, lethal, due to defective mitochondrial and peroxisomal fission (EMPF). Alternative splicing results in multiple transcript variants encoding different isoforms.

Description

Phospho-DRP1-S637 Polyclonal Antibody. Unconjugated. Raised in: Rabbit.

Formulation

Buffer: PBS with 0.05% proclin300, 50% glycerol, pH7.3

Specificity

Rat

Isotype

IgG

Uniprot ID

O00429

Purification

Affinity Purification

Immunogen

A synthetic phosphorylated peptide around S637 of human DRP1 (NP_036192.2).

Storage

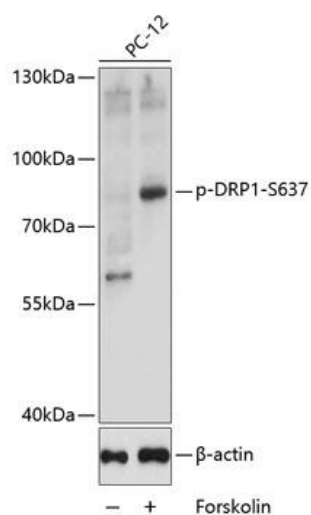
Shipped at 4°C. Upon receipt, store at -20°C. Avoid freeze / thaw cycles

Alternative Names

DNM1L; DLP1; DRP1; DVLP; DYMPLE; EMPF; EMPF1; HDYNIV; dynamin 1 like

Application

ELISA, WB; Recommended dilution: WB 1:500 - 1:2000



Western blot analysis of extracts of PC-12 cells, using Phospho-DRP1-S637 antibody at 1:1000 dilution. PC-12 cells were treated by Forskolin (30uM) for 30 minutes. Secondary antibody: HRP Goat Anti-Rabbit IgG (H+L) at 1:10000 dilution.
Lysates/proteins: 25ug per lane.
Blocking buffer: 3% BSA.
Exposure time: 20s.