
RPS28 Polyclonal Antibody

(Catalog # A72191)

Background

Ribosomes, the organelles that catalyze protein synthesis, consist of a small 40S subunit and a large 60S subunit. Together these subunits are composed of 4 RNA species and approximately 80 structurally distinct proteins. This gene encodes a ribosomal protein that is a component of the 40S subunit. The protein belongs to the S28E family of ribosomal proteins. It is located in the cytoplasm. As is typical for genes encoding ribosomal proteins, there are multiple processed pseudogenes of this gene dispersed through the genome. [provided by RefSeq, Jul 2008]

Description

RPS28 Polyclonal Antibody. Unconjugated. Raised in: Rabbit.

Formulation

Buffer: PBS with 0.01% thimerosal, 50% glycerol, pH7.3.

Specificity

Human, Mouse, Rat

Isotype

IgG

Uniprot ID

P62857

Purification

Affinity Purified

Immunogen

Recombinant fusion protein containing a sequence corresponding to amino acids 1-69 of human RPS28 (NP_001022.1)

Storage

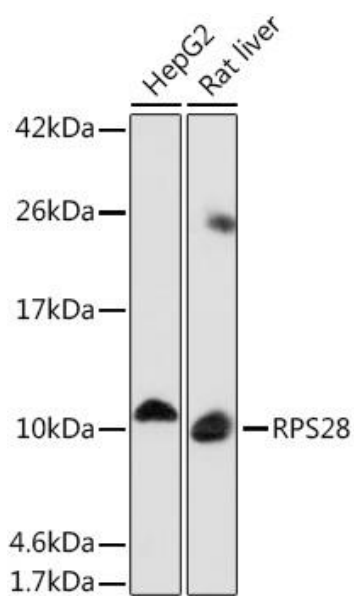
Shipped at 4°C. Upon receipt, store at -20°C. Avoid freeze / thaw cycles

Alternative Names

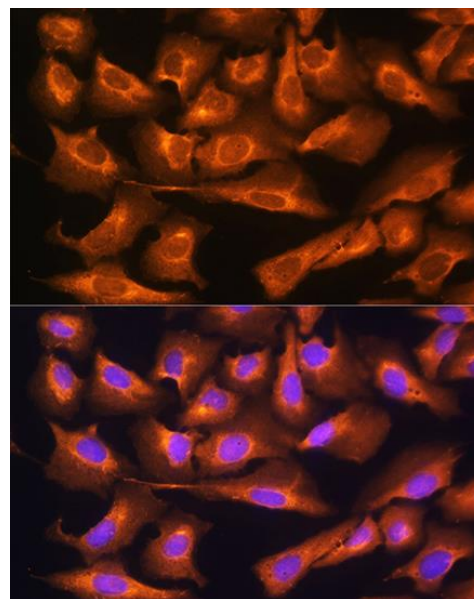
40S ribosomal protein S28

Application

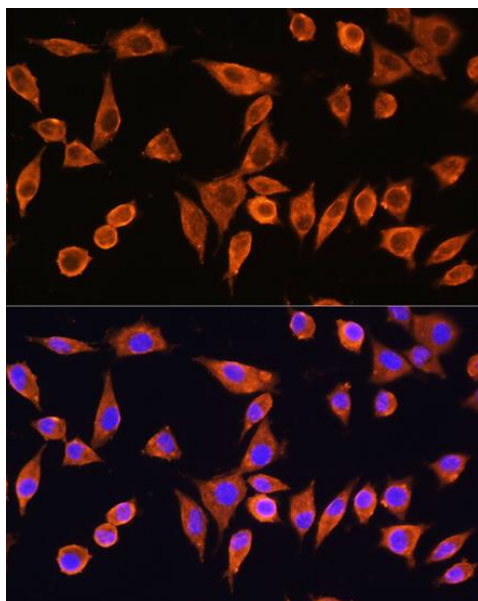
WB, IF; Recommended dilution: WB: 1:500-1:2000, IF:1:50-1:200



Western blot analysis of extracts of various cell lines, using RPS28 Polyclonal Antibody at 1:1000 dilution.
 Secondary antibody: HRP Goat Anti-Rabbit IgG (H+L) at 1:10000 dilution.
 Lysates/proteins: 25µg per lane.
 Blocking buffer: 3% nonfat dry milk in TBST.



Immunofluorescence analysis of U2OS cells using RPS28 Polyclonal Antibody at dilution of 1:100. Blue: DAPI for nuclear staining.



Immunofluorescence analysis of L929 cells using RPS28 Polyclonal Antibody at dilution of 1:100. Blue: DAPI for nuclear staining.