

NUP58 Polyclonal Antibody

(Catalog # A72102)

Background

This gene encodes a member of the nucleoporin family that shares 87% sequence identity with rat nucleoporin p58. The protein is localized to the nuclear rim and is a component of the nuclear pore complex (NPC). All molecules entering or leaving the nucleus either diffuse through or are actively transported by the NPC. Alternate transcriptional splice variants, encoding different isoforms, have been characterized. [provided by RefSeq, Jul 2008]

Description

NUP58 Polyclonal Antibody. Unconjugated. Raised in: Rabbit.

Formulation

Buffer: PBS with 0.02% sodium azide, 50% glycerol, pH7.3.

Specificity

Rat

Isotype

IgG

Uniprot ID

Q9BVL2

Purification

Affinity Purification

Immunogen

A synthetic peptide of Human NUP58.

Storage

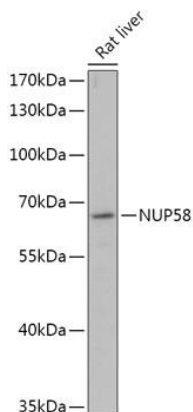
Shipped at 4°C. Upon receipt, store at -20°C. Avoid freeze / thaw cycles

Alternative Names

NUP45, NUPL1, PRO2463

Application

WB; Recommended dilution: WB 1:500 - 1:2000



Western blot analysis of extracts of Rat liver, using NUP58 Polyclonal Antibody at 1:1000 dilution.
Secondary antibody: HRP Goat Anti-Rabbit IgG (H+L) at 1:10000 dilution.
Lysates/proteins: 25ug per lane.
Blocking buffer: 3% nonfat dry milk in TBST.
Exposure time: 60s.