

---

## ALOX5 Polyclonal Antibody

(Catalog #A71901)

---

### Background

This gene encodes a member of the lipoxygenase gene family and plays a dual role in the synthesis of leukotrienes from arachidonic acid. The encoded protein, which is expressed specifically in bone marrow-derived cells, catalyzes the conversion of arachidonic acid to 5(S)-hydroperoxy-6-trans-8,11,14-cis-eicosatetraenoic acid, and further to the allylic epoxide 5(S)-trans-7,9-trans-11,14-cis-eicosatetraenoic acid (leukotriene A<sub>4</sub>). Leukotrienes are important mediators of a number of inflammatory and allergic conditions. Mutations in the promoter region of this gene lead to a diminished response to antileukotriene drugs used in the treatment of asthma and may also be associated with atherosclerosis and several cancers. Alternatively spliced transcript variants encoding different isoforms have been found for this gene.

### Description

ALOX5 Polyclonal Antibody. Unconjugated. Raised in: Rabbit.

### Formulation

Buffer: PBS with 0.02% sodium azide, 50% glycerol, pH 7.3.

### Specificity

Human, Mouse, Rat

### Isotype

IgG

### Uniprot ID

P09917

### Purification

Affinity Purification

### Immunogen

Recombinant fusion protein containing a sequence corresponding to amino acids 1-200 of ALOX5 (NP\_000689.1).

### Storage

Shipped at 4°C. Upon receipt, store at -20°C. Avoid freeze / thaw cycles

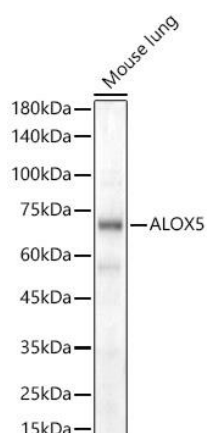
### Alternative Names

ALOX5; 5-LO; 5-LOX; 5LPG; LOG5; arachidonate 5-lipoxygenase

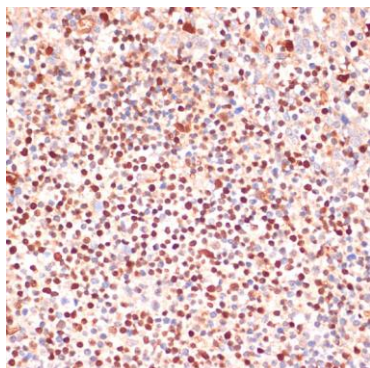
### Application

ELISA, WB, IHC, IF; Recommended dilution: WB 1:100 – 1:500, IHC 1:50 - 1:200, IF 1:50 - 1:200

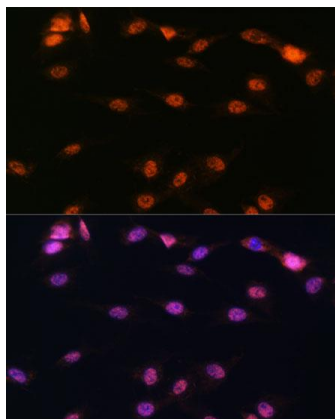
---



Western blot analysis of lysates from Mouse lung, using ALOX5 Polyclonal Antibody at 1:500 dilution. Secondary antibody: HRP-conjugated Goat anti-Rabbit IgG (H+L) at 1:10000 dilution. Lysates/proteins: 25µg per lane. Blocking buffer: 3% nonfat dry milk in TBST. Exposure time: 30s.



Immunohistochemistry of paraffin-embedded human tonsil using ALOX5 Polyclonal Antibody at dilution of 1:100 (40x lens).



Immunofluorescence analysis of C6 cells using ALOX5 Polyclonal Antibody at dilution of 1:100. Blue: DAPI for nuclear staining.