

---

## MGP Polyclonal Antibody

(Catalog #A71848)

---

### Background

The protein encoded by this gene is secreted and likely acts as an inhibitor of bone formation. The encoded protein is found in the organic matrix of bone and cartilage. Defects in this gene are a cause of Keutel syndrome (KS). Two transcript variants encoding different isoforms have been found for this gene.

### Description

MGP Polyclonal Antibody. Unconjugated. Raised in: Rabbit.

### Formulation

Buffer: PBS with 0.05% proclin300, 50% glycerol, pH7.3.

### Specificity

Human, Mouse, Rat

### Isotype

IgG

### Uniprot ID

P08493

### Purification

Affinity Purification

### Immunogen

Recombinant fusion protein containing a sequence corresponding to amino acids 20-103 of human MGP (NP\_000891.2).

### Storage

Shipped at 4°C. Upon receipt, store at -20°C. Avoid freeze / thaw cycles

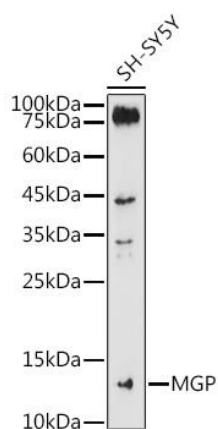
### Alternative Names

MGP; GIG36; MGLAP; NTI; matrix Gla protein

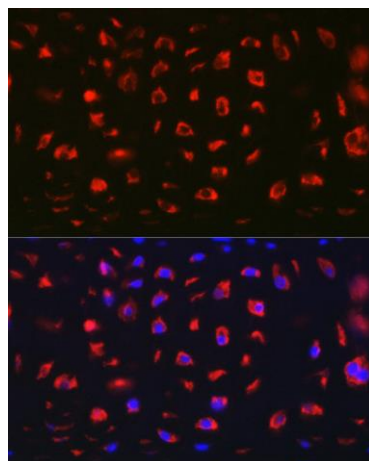
### Application

ELISA, WB, IHC, IF: Recommended dilution: WB 1:500 – 1:1000, IHC 1:50 – 1:200, IF 1:50 – 1:200

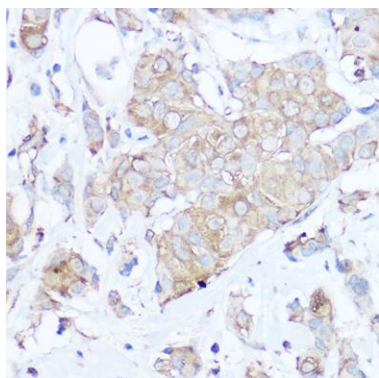
---



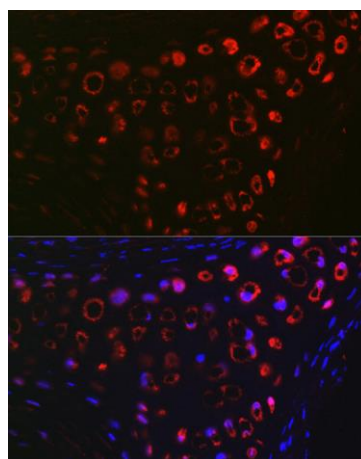
Western blot analysis of lysates from SH-SY5Y cells, using MGP Polyclonal Antibody at 1:1000 dilution.  
Secondary antibody: HRP Goat Anti-Rabbit IgG (H+L) at 1:10000 dilution.  
Lysates/proteins: 25µg per lane.  
Blocking buffer: 3% nonfat dry milk in TBST.  
Exposure time: 180s.



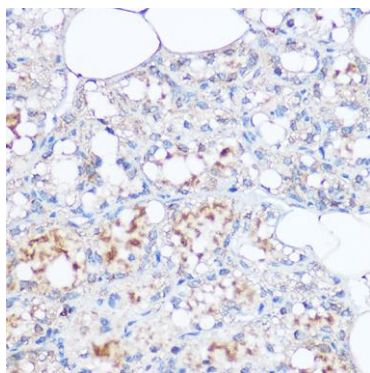
Immunofluorescence analysis of paraffin-embedded Rat cartilage using MGP Polyclonal Antibody at dilution of 1:100 (40x lens). Secondary antibody: Cy3 Goat Anti-Rabbit IgG (H+L) at 1:500 dilution. Blue: DAPI for nuclear staining.



Immunohistochemistry analysis of paraffin-embedded Human breast cancer using MGP Polyclonal Antibody at dilution of 1:100 (40x lens). Perform high pressure antigen retrieval with 10 mM citrate buffer pH 6.0 before commencing with IHC staining protocol.



Immunofluorescence analysis of paraffin-embedded Mouse cartilage using MGP Polyclonal Antibody at dilution of 1:100 (40x lens). Secondary antibody: Cy3 Goat Anti-Rabbit IgG (H+L) at 1:500 dilution. Blue: DAPI for nuclear staining.



Immunohistochemistry analysis of paraffin-embedded Rat breast using MGP Rabbit pAb (A5439) at dilution of 1:100 (40x lens). Perform high pressure antigen retrieval with 10 mM citrate buffer pH 6.0 before commencing with IHC staining protocol.