

PIP Polyclonal Antibody

(Catalog #A71561)

Description

PIP Polyclonal Antibody. Unconjugated. Raised in: Rabbit.

Formulation

Buffer: PBS with 0.02% sodium azide, 50% glycerol, pH7.3.

Specificity

Human, Mouse, Rat

Isotype

IgG

Uniprot ID

P12273

Purification

Affinity Purification

Immunogen

Recombinant fusion protein containing a sequence corresponding to amino acids 29-146 of human PIP (NP_002643.1).

Storage

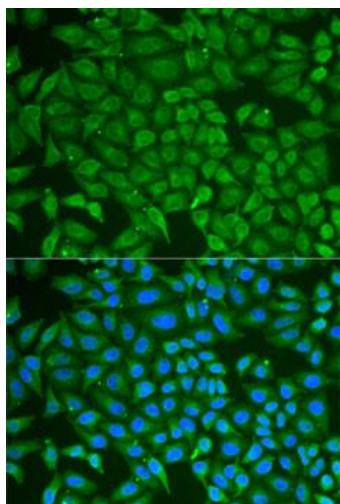
Shipped at 4°C. Upon receipt, store at -20°C. Avoid freeze / thaw cycles

Alternative Names

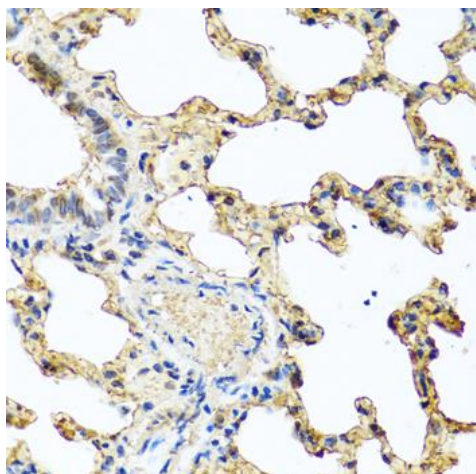
PIP; GCDFP-15; GCDFP15; GPIP4; prolactin induced protein

Application

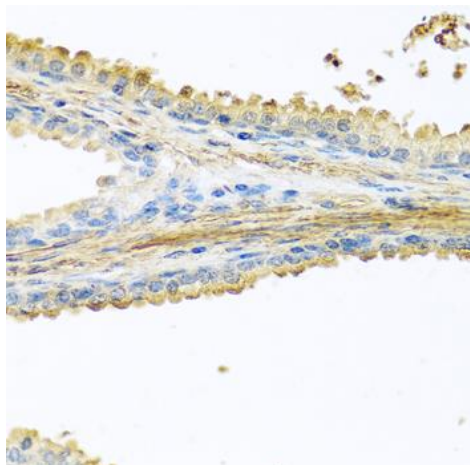
ELISA, IHC, IF; Recommended dilution: IHC 1:50 - 1:100, IF 1:50 - 1:100



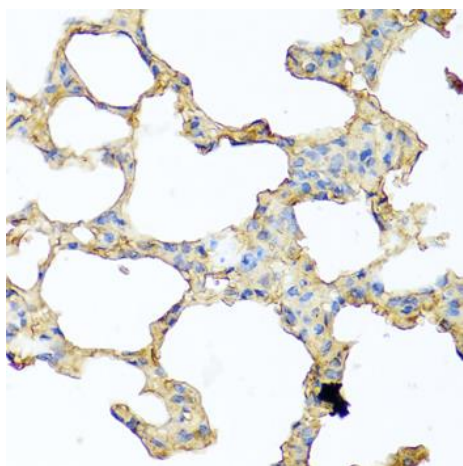
Immunofluorescence analysis of U2OS cells using PIP Polyclonal Antibody. Blue: DAPI for nuclear staining.



Immunohistochemistry of paraffin-embedded rat lung using PIP Polyclonal Antibody at dilution of 1:100 (40x lens).



Immunohistochemistry of paraffin-embedded human prostate using PIP Polyclonal Antibody at dilution of 1:100 (40x lens).



Immunohistochemistry of paraffin-embedded mouse lung using PIP Polyclonal Antibody at dilution of 1:100 (40x lens).