

---

## Estrogen Receptor beta Polyclonal Antibody

(Catalog #A71247)

---

### Background

This gene encodes a member of the family of estrogen receptors and superfamily of nuclear receptor transcription factors. The gene product contains an N-terminal DNA binding domain and C-terminal ligand binding domain and is localized to the nucleus, cytoplasm, and mitochondria. Upon binding to 17beta-estradiol or related ligands, the encoded protein forms homo- or hetero-dimers that interact with specific DNA sequences to activate transcription. Some isoforms dominantly inhibit the activity of other estrogen receptor family members. Several alternatively spliced transcript variants of this gene have been described, but the full-length nature of some of these variants has not been fully characterized.

### Description

Estrogen Receptor beta Polyclonal Antibody. Unconjugated. Raised in: Rabbit.

### Formulation

Buffer: PBS with 0.05% proclin300, 50% glycerol.

### Specificity

Human, Mouse, Rat

### Isotype

IgG

### Uniprot ID

Q92731

### Purification

Affinity Purification

### Immunogen

Recombinant fusion protein containing a sequence corresponding to amino acids 1-153 of human Estrogen Receptor beta (NP\_001428.1)

### Storage

Shipped at 4°C. Upon receipt, store at -20°C. Avoid freeze / thaw cycles

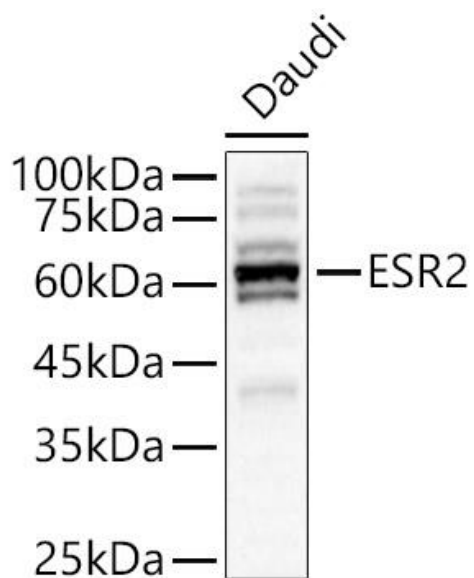
### Alternative Names

ESR2; ER-BETA; ESR-BETA; ESRB; ESTRB; Erb; NR3A2; estrogen receptor 2

### Application

WB, ELISA; Recommended dilution: WB:1:500-1:1000, ELISA - Recommended starting concentration is 1 µg/mL. Please optimize the concentration based on your specific assay requirements.

---



Western blot analysis of lysates from Daudi cells using Estrogen Receptor beta Polyclonal Antibody at 1:600 dilution.

Secondary antibody: HRP-conjugated Goat anti-Rabbit IgG (H+L) at 1:10000 dilution.

Lysates/proteins: 25 µg per lane.

Blocking buffer: 3% nonfat dry milk in TBST.

Exposure time: 10s.