

## CTSF Polyclonal Antibody

(Catalog # A70852)

### Background

Cathepsins are papain family cysteine proteinases that represent a major component of the lysosomal proteolytic system. Cathepsins generally contain a signal sequence, followed by a propeptide and then a catalytically active mature region. The very long (251 amino acid residues) proregion of the cathepsin F precursor contains a C-terminal domain similar to the pro-segment of cathepsin L-like enzymes, a 50-residue flexible linker peptide, and an N-terminal domain predicted to adopt a cystatin-like fold. The cathepsin F proregion is unique within the papain family cysteine proteases in that it contains this additional N-terminal segment predicted to share structural similarities with cysteine protease inhibitors of the cystatin superfamily. This cystatin-like domain contains some of the elements known to be important for inhibitory activity. CTSF encodes a predicted protein of 484 amino acids which contains a 19 residue signal peptide. Cathepsin F contains five potential N-glycosylation sites, and it may be targeted to the endosomal/lysosomal compartment via the mannose 6-phosphate receptor pathway. The cathepsin F gene is ubiquitously expressed, and it maps to chromosome 11q13, close to the gene encoding cathepsin W.

### Description

CTSF Polyclonal Antibody. Unconjugated. Raised in: Rabbit.

### Formulation

Buffer: PBS with 0.02% sodium azide, 50% glycerol, pH7.3.

### Specificity

Human, Mouse

### Isotype

IgG

### Uniprot ID

Q9UBX1

### Purification

Affinity Purification

### Immunogen

Recombinant fusion protein containing a sequence corresponding to amino acids 270-484 of human CTSF (NP\_003784.2).

### Storage

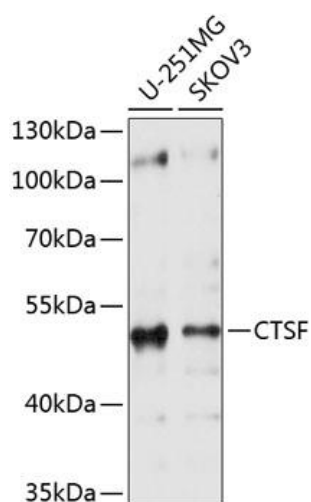
Shipped at 4°C. Upon receipt, store at -20°C. Avoid freeze / thaw cycles

### Alternative Names

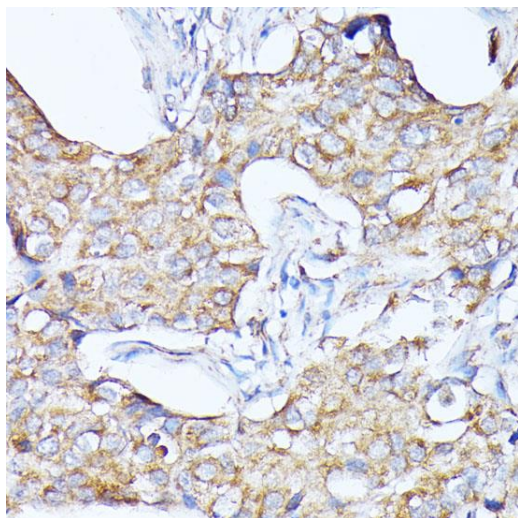
CTSF; CATSF; CLN13; cathepsin F

### Application

WB, IHC, IF; Recommended dilution: WB 1:500 - 1:2000, IHC 1:50 - 1:100, IF 1:50 - 1:100



Western blot analysis of extracts of various cell lines,  
using CTSF Polyclonal Antibody at 1:1000 dilution.  
Secondary Antibody: HRP Goat Anti-Rabbit IgG (H+L)  
at 1:10000 dilution.  
Lysates/proteins: 25ug per lane.  
Blocking buffer: 3% nonfat dry milk in TBST.  
Exposure time: 1s.



Immunohistochemistry of paraffin-embedded human  
breast cancer using CTSF Polyclonal Antibody at  
dilution of 1:100 (40x lens).