
FTH1 Polyclonal Antibody

(Catalog #A70823)

Background

This gene encodes the heavy subunit of ferritin, the major intracellular iron storage protein in prokaryotes and eukaryotes. It is composed of 24 subunits of the heavy and light ferritin chains. Variation in ferritin subunit composition may affect the rates of iron uptake and release in different tissues. A major function of ferritin is the storage of iron in a soluble and nontoxic state. Defects in ferritin proteins are associated with several neurodegenerative diseases. This gene has multiple pseudogenes. Several alternatively spliced transcript variants have been observed, but their biological validity has not been determined.

Description

FTH1 Polyclonal Antibody. Unconjugated. Raised in: Rabbit.

Formulation

Buffer: PBS with 0.09% Sodium azide, 50% glycerol, pH7.3.

Specificity

Human, Mouse, Rat

Isotype

IgG

Uniprot ID

P02794

Purification

Affinity Purification

Immunogen

Recombinant fusion protein containing a sequence corresponding to amino acids 1-183 of human Ferritin Heavy Chain (NP_002023.2).

Storage

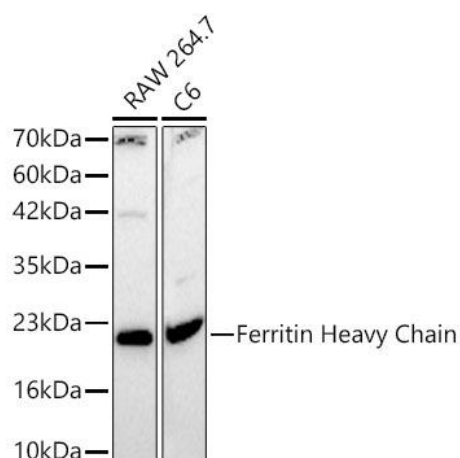
Shipped at 4°C. Upon receipt, store at -20°C. Avoid freeze / thaw cycles

Alternative Names

FTH1; FHC; FTH; FTHL6; HFE5; PIG15; PLIF; ferritin heavy chain

Application

ELISA, WB, IHC, IF; Recommended dilution: WB 1:500 - 1:2000, IHC 1:50 - 1:200, IF 1:50 - 1:200

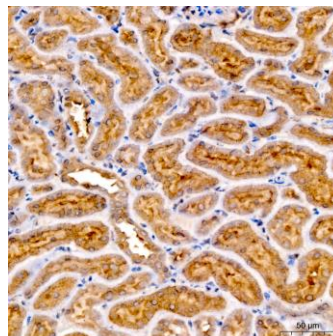


Western blot analysis of various lysates using FTH1 Polyclonal Antibody at 1:2000 dilution.

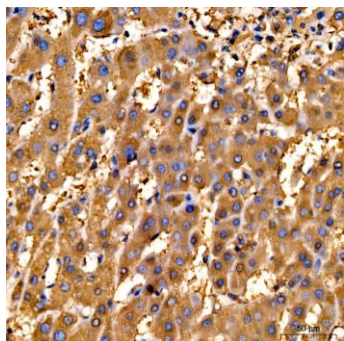
Secondary antibody: HRP Goat Anti-Rabbit IgG (H+L) at 1:10000 dilution.

Lysates / proteins: 25 µg per lane.

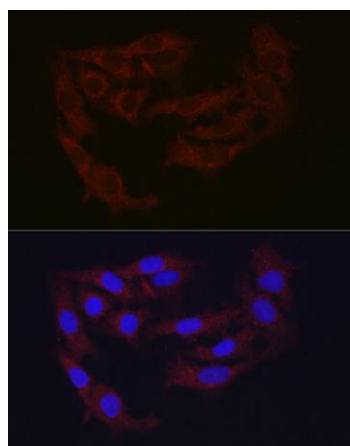
Blocking buffer: 3% nonfat dry milk in TBST.



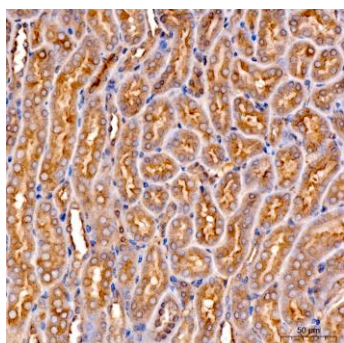
Immunohistochemistry analysis of FTH1 in paraffin-embedded rat kidney tissue using FTH1 Polyclonal Antibody at a dilution of 1:200 (40x lens). High-pressure antigen retrieval was performed with 0.01 M citrate buffer (pH 6.0) prior to IHC staining.



Immunohistochemistry analysis of FTH1 in paraffin-embedded human liver tissue using FTH1 Polyclonal Antibody at a dilution of 1:200 (40x lens). High-pressure antigen retrieval was performed with 0.01 M citrate buffer (pH 6.0) prior to IHC staining.



Immunofluorescence analysis of A-549 cells using FTH1 Polyclonal Antibody at dilution of 1:100 (40x lens). Secondary antibody: Cy3 Goat Anti-Rabbit IgG (H+L) at 1:500 dilution. Blue: DAPI for nuclear staining.



Immunohistochemistry analysis of FTH1 in paraffin-embedded mouse kidney tissue using FTH1 Polyclonal Antibody at a dilution of 1:200 (40x lens). High-pressure antigen retrieval was performed with 0.01 M citrate buffer (pH 6.0) prior to IHC staining.