

TET3 Polyclonal Antibody

(Catalog #A70559)

Background

Enables methyl-CpG binding activity and zinc ion binding activity. Involved in histone H3-K4 trimethylation; positive regulation of transcription by RNA polymerase II; and protein O-linked glycosylation. Predicted to be located in the cytoplasm and male pronucleus. Predicted to be active in the nucleus. Biomarker of esophagus squamous cell carcinoma.

Description

TET3 Polyclonal Antibody. Unconjugated. Raised in: Rabbit.

Formulation

Buffer: PBS with 0.01% thimerosal, 50% glycerol, pH7.3.

Specificity

Human, Mouse

Isotype

IgG

Uniprot ID

O43151

Purification

Affinity Purification

Immunogen

Recombinant fusion protein containing a sequence corresponding to amino acids 136-265 of TET3 (NP_001274420.1).

Storage

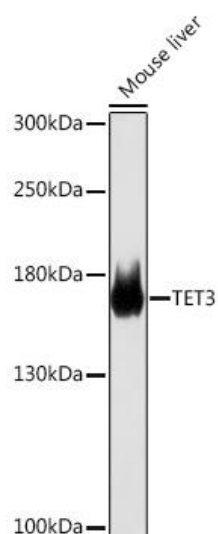
Shipped at 4°C. Upon receipt, store at -20°C. Avoid freeze / thaw cycles

Alternative Names

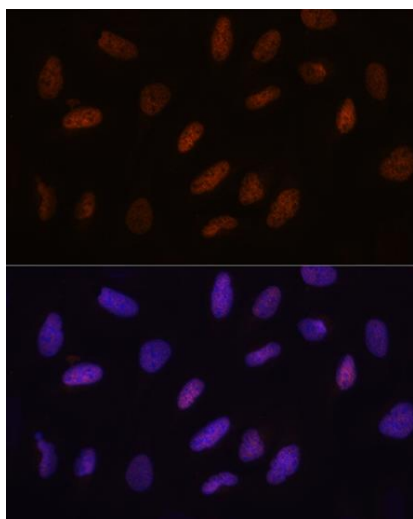
TET3; hCG_40738; methylcytosine dioxygenase TET3, BEFAHRS; hCG_40738

Application

ELISA, WB, IF; Recommended dilution: WB 1:500 - 1:2000, IF/ICC 1:50 - 1:200



Western blot analysis of lysates from Mouse liver, using TET3 Polyclonal Antibody at 1:1000 dilution.
Secondary antibody: HRP Goat Anti-Rabbit IgG (H+L) at 1:10000 dilution.
Lysates/proteins: 25µg per lane.
Blocking buffer: 3% nonfat dry milk in TBST.



Immunofluorescence analysis of U2OS cells using TET3 Polyclonal Antibody at dilution of 1:100.
Secondary antibody: Cy3 Goat Anti-Rabbit IgG (H+L) at 1:500 dilution. Blue: DAPI for nuclear staining.