

## SPAM1 Polyclonal Antibody

(Catalog #A70554)

### Background

Hyaluronidase degrades hyaluronic acid, a major structural proteoglycan found in extracellular matrices and basement membranes. Six members of the hyaluronidase family are clustered into two tightly linked groups on chromosome 3p21.3 and 7q31.3. This gene was previously referred to as HYAL1 and HYA1 and has since been assigned the official symbol SPAM1; another family member on chromosome 3p21.3 has been assigned HYAL1. This gene encodes a GPI-anchored enzyme located on the human sperm surface and inner acrosomal membrane. This multifunctional protein is a hyaluronidase that enables sperm to penetrate through the hyaluronic acid-rich cumulus cell layer surrounding the oocyte, a receptor that plays a role in hyaluronic acid induced cell signaling, and a receptor that is involved in sperm-zona pellucida adhesion. Abnormal expression of this gene in tumors has implicated this protein in degradation of basement membranes leading to tumor invasion and metastasis. Multiple transcript variants encoding different isoforms have been found for this gene.

### Description

SPAM1 Polyclonal Antibody. Unconjugated. Raised in: Rabbit.

### Formulation

Buffer: PBS with 0.09% Sodium azide, 50% glycerol, pH7.3.

### Specificity

Human, Mouse, Rat

### Isotype

IgG

### Uniprot ID

P38567

### Purification

Affinity Purified

### Immunogen

Recombinant fusion protein containing a sequence corresponding to amino acids 100-300 of human SPAM1 (NP\_003108.2).

### Storage

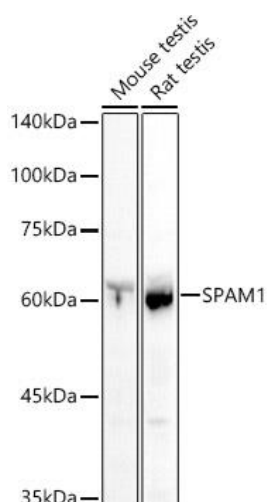
Shipped at 4°C. Upon receipt, store at -20°C. Avoid freeze / thaw cycles

### Alternative Names

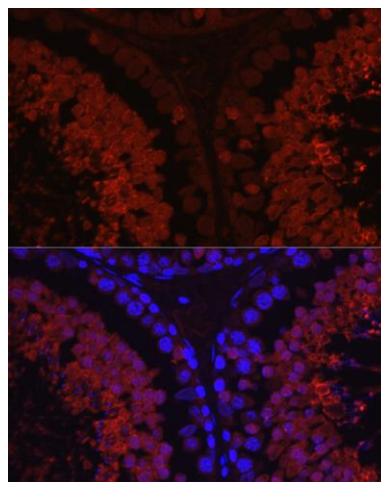
SPAM1; HEL-S-96n; HYA1; HYAL1; HYAL3; HYAL5; PH-20; PH20; SPAG15; hyaluronidase PH-20

### Application

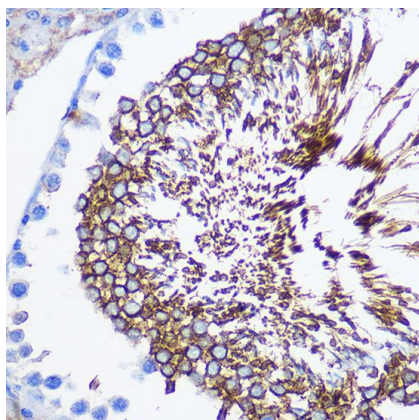
ELISA, WB, IHC, IF; Recommended dilution: WB 1:500 – 1:1000, IHC 1:50 – 1:200, IF 1:50 – 1:200



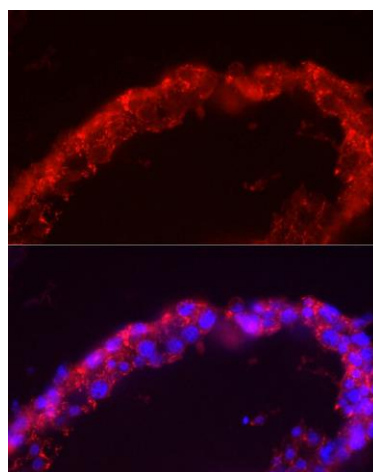
Western blot analysis of various lysates using SPAM1 Polyclonal Antibody at 1:1000 dilution. Secondary antibody: HRP Goat Anti-Rabbit IgG (H+L) at 1:10000 dilution. Lysates/proteins: 25µg per lane. Blocking buffer: 3% nonfat dry milk in TBST. Exposure time: 10s.



Immunofluorescence analysis of paraffin-embedded rat testis using SPAM1 Polyclonal Antibody at dilution of 1:100 (40x lens). Secondary antibody: Cy3 Goat Anti-Rabbit IgG (H+L) at 1:500 dilution. Blue: DAPI for nuclear staining.



Immunohistochemistry analysis of paraffin-embedded rat testis using SPAM1 Polyclonal Antibody at dilution of 1:100 (40x lens).



Immunofluorescence analysis of paraffin-embedded human testis using SPAM1 Polyclonal Antibody at dilution of 1:100 (40x lens). Secondary antibody: Cy3 Goat Anti-Rabbit IgG (H+L) at 1:500 dilution. Blue: DAPI for nuclear staining.