

---

## GIF Polyclonal Antibody

(Catalog # A70496)

---

### Background

This gene is a member of the cobalamin transport protein family. It encodes a glycoprotein secreted by parietal cells of the gastric mucosa and is required for adequate absorption of vitamin B12. Vitamin B12 is necessary for erythrocyte maturation and mutations in this gene may lead to congenital pernicious anemia.

### Description

GIF Polyclonal Antibody. Unconjugated. Raised in: Rabbit.

### Formulation

Buffer: PBS with 0.02% sodium azide, 50% glycerol, pH7.3.

### Specificity

Human, Mouse

### Isotype

IgG

### Uniprot ID

P27352

### Purification

Affinity Purification

### Immunogen

Recombinant fusion protein containing a sequence corresponding to amino acids 20-300 of human GIF (NP\_005133.2).

### Storage

Shipped at 4°C. Upon receipt, store at -20°C. Avoid freeze / thaw cycles

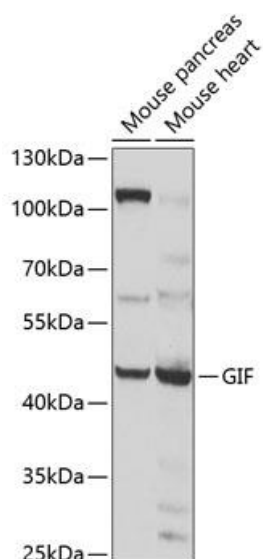
### Alternative Names

GIF; IF; IFMH; INF; TCN3; gastric intrinsic factor

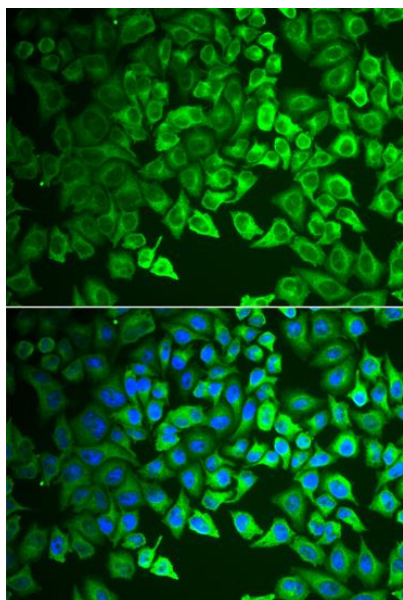
### Application

WB, IF/ICC, ELISA; Recommended dilution: WB 1:500 - 1:2000, IF/ICC 1:50 - 1:100

---



Western blot analysis of extracts of various cell lines, using GIF Polyclonal Antibody at 1:1000 dilution.  
Secondary antibody: HRP Goat Anti-Rabbit IgG (H+L) at 1:10000 dilution.  
Lysates/proteins: 25ug per lane.  
Blocking buffer: 3% nonfat dry milk in TBST.  
Exposure time: 1s.



Immunofluorescence analysis of A549 cells using GIF Polyclonal Antibody. Blue: DAPI for nuclear staining.