
KLF13 Polyclonal Antibody

(Catalog # A70347)

Background

Represses transcription by binding to the BTE site, a GC-rich DNA element, in competition with the activator SP1. It also represses transcription by interacting with the corepressor Sin3A and HDAC1. Activates RANTES expression in T-cells.

Description

KLF13 Polyclonal Antibody. Unconjugated. Raised in: Rabbit.

Formulation

Liquid. 0.03% Proclin 300, 50% Glycerol, 0.01M PBS, pH 7.4.

Specificity

Human

Isotype

IgG

Uniprot ID

Q9Y2Y9

Purification

>95%, Protein G purified

Immunogen

Recombinant Human Krueppel-like factor 13 protein (26-147AA)

Storage

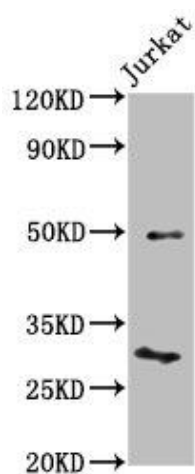
Shipped at 4°C. Upon receipt, store at -20°C (short-term) or -80°C (long-term). Avoid repeated freeze.

Alternative Names

Krueppel-like factor 13, Basic transcription element-binding protein 3, BTE-binding protein 3, Novel Sp1-like zinc finger transcription factor 1, RANTES factor of late activated T-lymphocytes 1, RFLAT-1, Transcription factor BTEB3, Transcription factor NSLP1, KLF13, BTEB3, NSLP1

Application

ELISA, WB, IHC; Recommended dilution: WB: 1:500-1:5000, IHC: 1:200-1:500



Western Blot

Positive WB detected in: Jurkat whole cell lysate

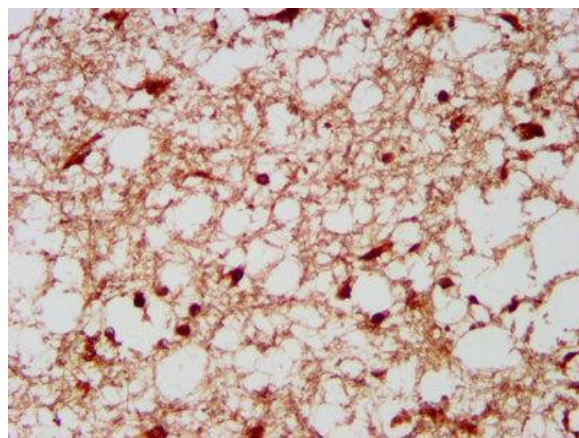
All lanes: KLF13 antibody at 4.2ug/ml

Secondary

Goat polyclonal to rabbit IgG at 1/50000 dilution

Predicted band size: 32 KDa

Observed band size: 32 KDa



IHC image of KLF13 Polyclonal Antibody diluted at 1:300 and staining in paraffin-embedded human brain tissue performed on a Leica Bond™ system. After dewaxing and hydration, antigen retrieval was mediated by high pressure in a citrate buffer (pH 6.0). Section was blocked with 10% normal goat serum 30min at RT. Then primary antibody (1% BSA) was incubated at 4°C overnight. The primary is detected by a biotinylated secondary antibody and visualized using an HRP conjugated SP system.