

CDK12 Polyclonal Antibody

(Catalog # A70299)

Background

Cyclin-dependent kinase that phosphorylates the C-terminal domain (CTD) of the large subunit of RNA polymerase II (POLR2A), thereby acting as a key regulator of transcription elongation. Regulates the expression of genes involved in DNA repair and is required for the maintenance of genomic stability. Preferentially phosphorylates 'Ser-5' in CTD repeats that are already phosphorylated at 'Ser-7', but can also phosphorylate 'Ser-2'. Required for RNA splicing, possibly by phosphorylating SRSF1/SF2. Involved in regulation of MAP kinase activity, possibly leading to affect the response to estrogen inhibitors.

Description

CDK12 Polyclonal Antibody. Unconjugated. Raised in: Rabbit.

Formulation

Liquid. 0.03% Proclin 300, 50% Glycerol, 0.01M PBS, pH 7.4.

Specificity

Human

Isotype

IgG

Uniprot ID

Q9NYV4

Purification

>95%, Protein G purified

Immunogen

Recombinant Human Cyclin-dependent kinase 12 protein (1309-1490AA)

Storage

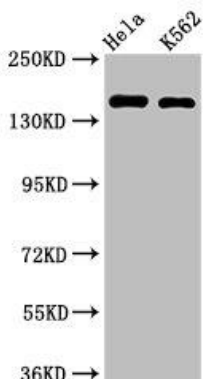
Shipped at 4°C. Upon receipt, store at -20°C (short-term) or -80°C (long-term). Avoid repeated freeze.

Alternative Names

Cyclin-dependent kinase 12, Cdc2-related kinase, arginine/serine-rich, CrkRS, Cell division cycle 2-related protein kinase 7, CDC2-related protein kinase 7, Cell division protein kinase 12, hCDK12, CDK12, CRK7, CRKRS, KIAA0904

Application

ELISA, WB; Recommended dilution: WB: 1:500-1:5000



Western Blot

Positive WB detected in: Hela whole cell lysate, K562 whole cell lysate

All lanes: CDK12 antibody at 2ug/ml

Secondary

Goat polyclonal to rabbit IgG at 1/50000 dilution

Predicted band size: 165, 164, 142 KDa

Observed band size: 165 KDa