

PCDH11X Polyclonal Antibody

(Catalog # A70219)

Background

Potential calcium-dependent cell-adhesion protein.

Description

PCDH11X Polyclonal Antibody. Unconjugated. Raised in: Rabbit.

Formulation

Liquid. 0.03% Proclin 300, 50% Glycerol, 0.01M PBS, pH 7.4.

Specificity

Human

Isotype

IgG

Uniprot ID

Q9BZA7

Purification

>95%, Protein G purified

Immunogen

Recombinant Human Protocadherin-11 X-linked protein (987-1117AA)

Storage

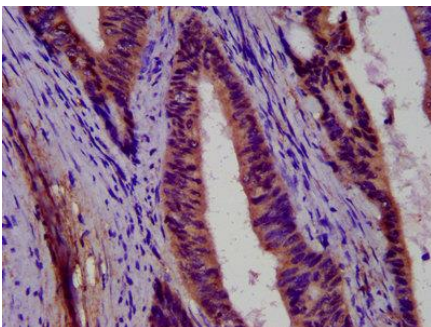
Shipped at 4°C. Upon receipt, store at -20°C (short-term) or -80°C (long-term). Avoid repeated freeze.

Alternative Names

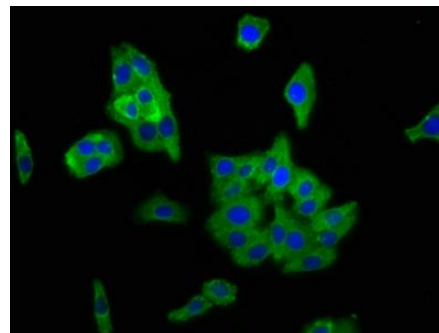
Protocadherin-11 X-linked, Protocadherin-11, Protocadherin on the X chromosome, PCDH-X, Protocadherin-S, PCDH11X, KIAA1326, PCDH11, PCDHX

Application

ELISA, IHC, IF; Recommended dilution: IHC: 1:500-1:1000, IF: 1:50-1:200



IHC image of PCDH11X Polyclonal Antibody diluted at 1:500 and staining in paraffin-embedded human colon cancer performed on a Leica Bond™ system. After dewaxing and hydration, antigen retrieval was mediated by high pressure in a citrate buffer (pH 6.0). Section was blocked with 10% normal goat serum 30min at RT. Then primary antibody (1% BSA) was incubated at 4°C overnight. The primary is detected by a biotinylated secondary antibody and visualized using an HRP conjugated SP system.



Immunofluorescence staining of HepG2 cells with PCDH11X Polyclonal Antibody at 1:166, counter-stained with DAPI. The cells were fixed in 4% formaldehyde, permeabilized using 0.2% Triton X-100 and blocked in 10% normal Goat Serum. The cells were then incubated with the antibody overnight at 4°C. The secondary antibody was Alexa Fluor 488-conjugated AffiniPure Goat Anti-Rabbit IgG (H+L).