

CUX1 Polyclonal Antibody

(Catalog # A69855)

Background

May be involved in intra-Golgi retrograde transport.

Description

CUX1 Polyclonal Antibody. Unconjugated. Raised in: Rabbit.

Formulation

Liquid. 0.03% Proclin 300, 50% Glycerol, 0.01M PBS, pH 7.4.

Specificity

Human, Mouse, Rat

Isotype

IgG

Uniprot ID

Q13948

Purification

>95%, Protein G purified

Immunogen

Recombinant Human Protein CASP protein (50-210AA)

Storage

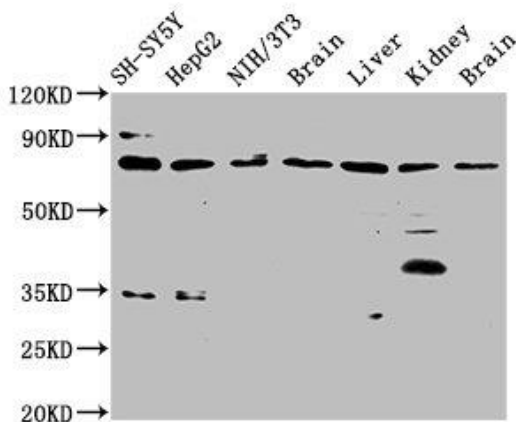
Shipped at 4°C. Upon receipt, store at -20°C (short-term) or -80°C (long-term). Avoid repeated freeze.

Alternative Names

Protein CASP, CUX1, CUTL1

Application

ELISA, WB, IHC; Recommended dilution: WB: 1:500-1:5000, IHC: 1:200-1:500



Western Blot

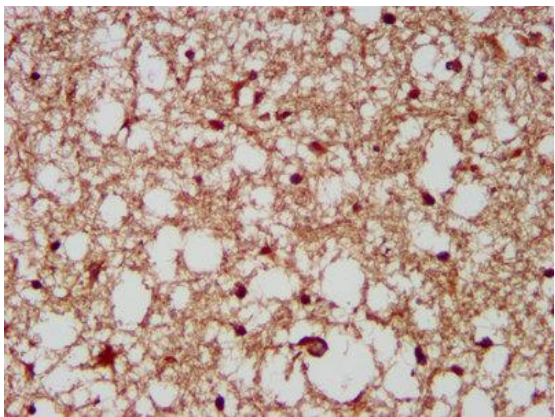
Positive WB detected in: SH-SY5Y whole cell lysate, HepG2 whole cell lysate, NIH/3T3 whole cell lysate, Rat brain tissue, Rat liver tissue, Rat kidney tissue, Mouse brain tissue
All lanes: CUX1 antibody at 3.7ug/ml

Secondary

Goat polyclonal to rabbit IgG at 1/50000 dilution

Predicted band size: 78, 73 KDa

Observed band size: 78 KDa



IHC image of CUX1 Polyclonal Antibody diluted at 1:200 and staining in paraffin-embedded human brain tissue performed on a Leica Bond™ system. After dewaxing and hydration, antigen retrieval was mediated by high pressure in a citrate buffer (pH 6.0). Section was blocked with 10% normal goat serum 30min at RT. Then primary antibody (1% BSA) was incubated at 4°C overnight. The primary is detected by a biotinylated secondary antibody and visualized using an HRP conjugated SP system.