
BZLF2 Polyclonal Antibody

(Catalog #A69831)

Background

Plays a role in virion attachment to host B-lymphocytes, through binding to leukocyte antigen (HLA) class II and subsequently participates in fusion of the virion with host membranes. May act as a tropism switch that directs fusion with B-lymphocytes and inhibits fusion with epithelial cells. Additionally, hampers T-cell recognition via HLA class II molecules through steric hindrance of T-cell receptor-class II-peptide interaction.

Description

BZLF2 Polyclonal Antibody. Unconjugated. Raised in: Rabbit.

Formulation

Liquid. 0.03% Proclin 300, 50% Glycerol, 0.01M PBS, pH 7.4.

Specificity

Epstein-Barr virus

Isotype

IgG

Uniprot ID

P03205

Purification

>95%, Protein G purified

Immunogen

Recombinant Epstein-Barr virus Glycoprotein 42 protein (34-223AA)

Storage

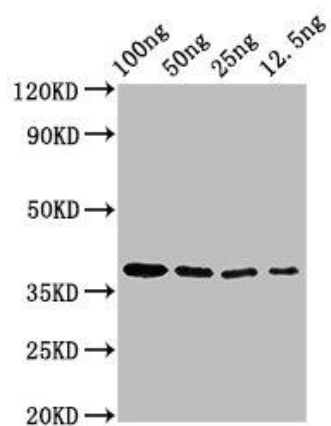
Shipped at 4°C. Upon receipt, store at -20°C (short-term) or -80°C (long-term). Avoid repeated freeze.

Alternative Names

Glycoprotein 42, gp42, Soluble gp42, BZLF2

Application

ELISA, WB; Recommended dilution: WB: 1:500-1:5000



Western Blot

Positive WB detected in Recombinant protein

All lanes: BZLF2 antibody at 3ug/ml

Secondary

Goat polyclonal to rabbit IgG at 1/50000 dilution

Predicted band size: 38 KDa

Observed band size: 38 KDa