

IGSF9 Polyclonal Antibody

(Catalog # A69807)

Background

Functions in dendrite outgrowth and synapse maturation.

Description

IGSF9 Polyclonal Antibody. Unconjugated. Raised in: Rabbit.

Formulation

Liquid. 0.03% Proclin 300, 50% Glycerol, 0.01M PBS, pH 7.4.

Specificity

Human

Isotype

IgG

Uniprot ID

Q9P2J2

Purification

>95%, Protein G purified

Immunogen

Recombinant Human Protein turtle homolog A protein (132-298AA)

Storage

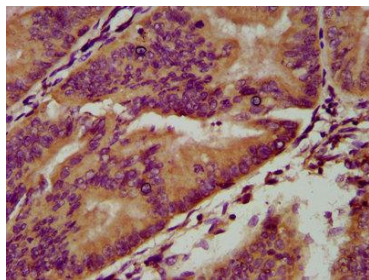
Shipped at 4°C. Upon receipt, store at -20°C (short-term) or -80°C (long-term). Avoid repeated freeze.

Alternative Names

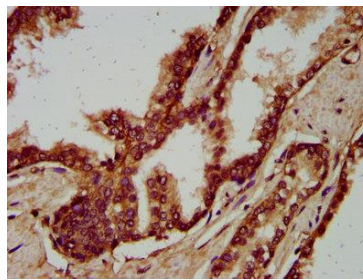
Protein turtle homolog A, Immunoglobulin superfamily member 9A, IgSF9A, IGSF9, IGSF9A, KIAA1355, NRT1

Application

ELISA, IHC; Recommended dilution: IHC: 1:200-1:500



IHC image of IGSF9 Polyclonal Antibody diluted at 1:200 and staining in paraffin-embedded human endometrial cancer performed on a Leica Bond™ system. After dewaxing and hydration, antigen retrieval was mediated by high pressure in a citrate buffer (pH 6.0). Section was blocked with 10% normal goat serum 30min at RT. Then primary antibody (1% BSA) was incubated at 4°C overnight. The primary is detected by a biotinylated secondary antibody and visualized using an HRP conjugated SP system.



IHC image of IGSF9 Polyclonal Antibody diluted at 1:200 and staining in paraffin-embedded human prostate cancer performed on a Leica Bond™ system. After dewaxing and hydration, antigen retrieval was mediated by high pressure in a citrate buffer (pH 6.0). Section was blocked with 10% normal goat serum 30min at RT. Then primary antibody (1% BSA) was incubated at 4°C overnight. The primary is detected by a biotinylated secondary antibody and visualized using an HRP conjugated SP system.