

NKX2-8 Polyclonal Antibody

(Catalog # A69627)

Background

double-stranded DNA binding, RNA polymerase II core promoter proximal region sequence-specific DNA binding, sequence-specific DNA binding, transcription factor activity, sequence-specific DNA binding, transcriptional activator activity, RNA polymerase II core promoter proximal region sequence-specific binding, liver development, positive regulation of transcription from RNA polymerase II promoter, transcription from RNA polymerase II promoter, transcription, DNA-templated

Description

NKX2-8 Polyclonal Antibody. Unconjugated. Raised in: Rabbit.

Formulation

Liquid. 0.03% Proclin 300, 50% Glycerol, 0.01M PBS, pH 7.4.

Specificity

Human

Isotype

IgG

Uniprot ID

O15522

Purification

>95%, Protein G purified

Immunogen

Recombinant Human Homeobox protein Nkx-2.8 protein (1-160AA)

Storage

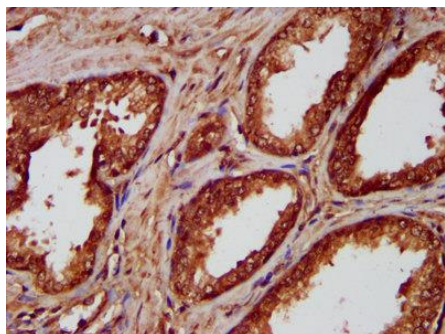
Shipped at 4°C. Upon receipt, store at -20°C (short-term) or -80°C (long-term). Avoid repeated freeze.

Alternative Names

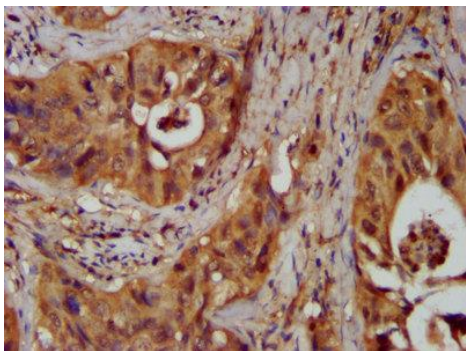
Homeobox protein Nkx-2.8, Homeobox protein NK-2 homolog H, NKX2-8, NKX-2.8, NKX2G, NKX2H

Application

ELISA, IHC; Recommended dilution: IHC: 1:200-1:500



IHC image of NKX2-8 Polyclonal Antibody diluted at 1:300 and staining in paraffin-embedded human prostate cancer performed on a Leica Bond™ system. After dewaxing and hydration, antigen retrieval was mediated by high pressure in a citrate buffer (pH 6.0). Section was blocked with 10% normal goat serum 30min at RT. Then primary antibody (1% BSA) was incubated at 4°C overnight. The primary is detected by a biotinylated secondary antibody and visualized using an HRP conjugated SP system.



IHC image of NKX2-8 Polyclonal Antibody diluted at 1:300 and staining in paraffin-embedded human cervical cancer performed on a Leica Bond™ system. After dewaxing and hydration, antigen retrieval was mediated by high pressure in a citrate buffer (pH 6.0). Section was blocked with 10% normal goat serum 30min at RT. Then primary antibody (1% BSA) was incubated at 4°C overnight. The primary is detected by a biotinylated secondary antibody and visualized using an HRP conjugated SP system.