
LSAMP Polyclonal Antibody

(Catalog # A69583)

Background

Mediates selective neuronal growth and axon targeting. Contributes to the guidance of developing axons and remodeling of mature circuits in the limbic system. Essential for normal growth of the hippocampal mossy fiber projection.

Description

LSAMP Polyclonal Antibody. Unconjugated. Raised in: Rabbit.

Formulation

0.03% Proclin 300. 50% Glycerol, 0.01M PBS, pH 7.4.

Specificity

Human, Mouse, Rat

Isotype

IgG

Uniprot ID

Q13449

Purification

Protein G purified

Immunogen

Recombinant Human Limbic system-associated membrane protein (168-287AA)

Storage

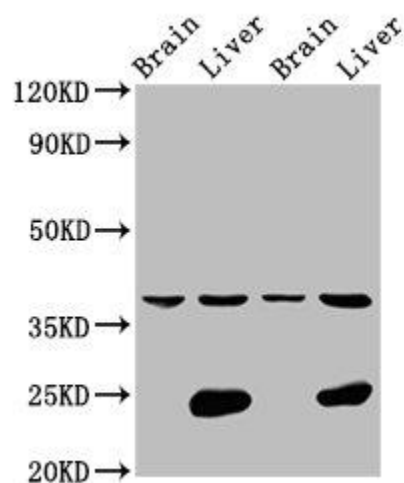
Shipped at 4°C. Upon receipt, store at -20°C (short-term) or -80°C (long-term). Avoid repeated freeze.

Alternative Names

Limbic system-associated membrane protein, LSAMP, IgLON family member 3, LSAMP, IGLON3, LAMP

Application

ELISA, WB, IF; Recommended dilution: WB:1:500-1:5000, IF:1:50-1:200



Western Blot

Positive WB detected in: Rat brain tissue, Rat liver tissue,
Mouse brain tissue, Mouse liver tissue

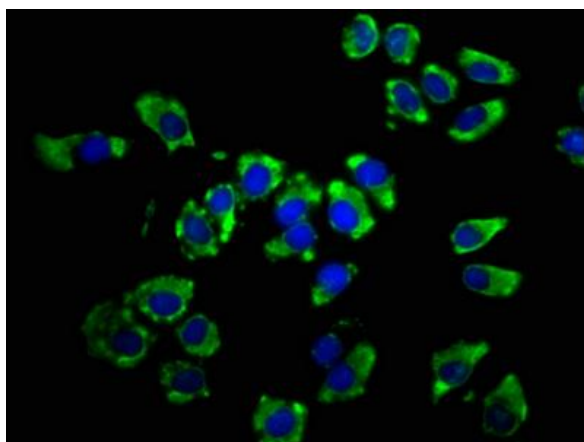
All lanes: LSAMP antibody at 4.2ug/ml

Secondary

Goat polyclonal to rabbit IgG at 1/50000 dilution

Predicted band size: 38 KDa

Observed band size: 38 KDa



Immunofluorescence staining of A549 cells with LSAMP

Polyclonal Antibody at 1:66, counter-stained with DAPI. The cells were fixed in 4% formaldehyde, permeabilized using 0.2% Triton X-100 and blocked in 10% normal Goat Serum. The cells were then incubated with the antibody overnight at 4°C. The secondary antibody was Alexa Fluor 488-conjugated AffiniPure Goat Anti-Rabbit IgG (H+L).