

CEACAM16 Polyclonal Antibody

(Catalog # A69431)

Background

Required for proper hearing, it may play a role in maintaining the integrity of the tectorial membrane.

Description

CEACAM16 Polyclonal Antibody. Unconjugated. Raised in: Rabbit.

Formulation

Liquid. 0.03% Proclin 300, 50% Glycerol, 0.01M PBS, pH 7.4.

Specificity

Human

Isotype

IgG

Uniprot ID

Q2WEN9

Purification

>95%, Protein G purified

Immunogen

Recombinant Human Carcinoembryonic antigen-related cell adhesion molecule 16 protein (323-414AA)

Storage

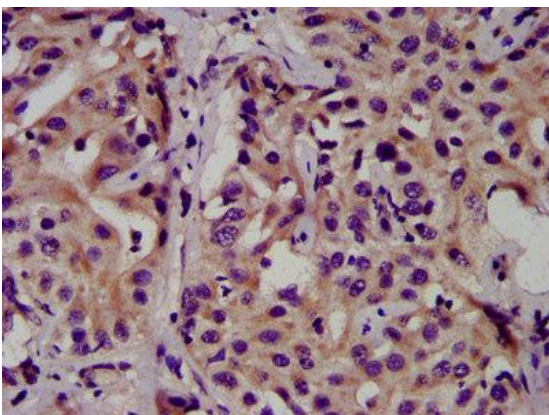
Shipped at 4°C. Upon receipt, store at -20°C (short-term) or -80°C (long-term). Avoid repeated freeze.

Alternative Names

Carcinoembryonic antigen-related cell adhesion molecule 16, Carcinoembryonic antigen-like 2, CEACAM16, CEAL2

Application

ELISA, IHC; Recommended dilution: IHC: 1:500-1:1000



IHC image of CEACAM16 Polyclonal Antibody diluted at 1:500 and staining in paraffin-embedded human liver cancer performed on a Leica Bond™ system. After dewaxing and hydration, antigen retrieval was mediated by high pressure in a citrate buffer (pH 6.0). Section was blocked with 10% normal goat serum 30min at RT. Then primary antibody (1% BSA) was incubated at 4°C overnight. The primary is detected by a biotinylated secondary antibody and visualized using an HRP conjugated SP system.