

POPDC3 Polyclonal Antibody

(Catalog #A69255)

Background

May play a role in the maintenance of heart function mediated, at least in part, through cAMP-binding.

Description

POPDC3 Polyclonal Antibody. Unconjugated. Raised in: Rabbit.

Formulation

0.03% Proclin 300, 50% Glycerol, 0.01M PBS, pH 7.4

Specificity

Human

Isotype

IgG

Uniprot ID

Q9HBV1

Purification

Protein G purified

Immunogen

Recombinant Human Popeye domain-containing protein 3 protein (130-291AA)

Storage

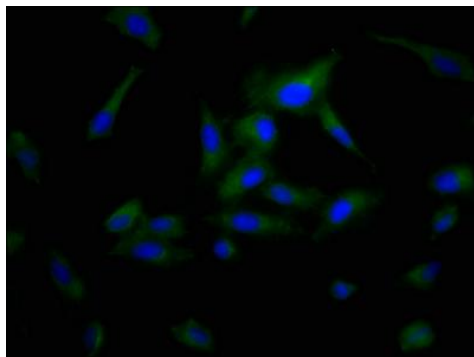
Shipped at 4°C. Upon receipt, store at -20°C (short-term) or -80°C (long-term). Avoid repeated freeze.

Alternative Names

Popeye domain-containing protein 3, Popeye protein 3, POPDC3, POP3

Application

ELISA, IF; Recommended dilution: IF 1:200 - 1:500



Immunofluorescence staining of HeLa cells with POPDC3 Polyclonal Antibody at 1:200, counter-stained with DAPI. The cells were fixed in 4% formaldehyde, permeabilized using 0.2% Triton X-100 and blocked in 10% normal Goat Serum. The cells were then incubated with the antibody overnight at 4°C. The secondary antibody was Alexa Fluor 488-conjugated AffiniPure Goat Anti-Rabbit IgG (H+L).