

---

## SCUBE2 Polyclonal Antibody

(Catalog #A69183)

---

### Background

SCUBE2 (Signal Peptide, CUB Domain And EGF Like Domain Containing 2) is a Protein Coding gene. Among its related pathways are CDK-mediated phosphorylation and removal of Cdc6 and Signaling by Hedgehog. GO annotations related to this gene include calcium ion binding. An important paralog of this gene is SCUBE1.

### Description

SCUBE2 Polyclonal Antibody. Unconjugated. Raised in: Rabbit.

### Formulation

Liquid. 0.03% Proclin 300, 50% Glycerol, 0.01M PBS, pH 7.4.

### Specificity

Human, Rat

### Isotype

IgG

### Uniprot ID

Q9NQ36

### Purification

>95%, Protein G purified

### Immunogen

Recombinant Human Signal peptide, CUB and EGF-like domain-containing protein 2 protein (534-703AA)

### Storage

Shipped at 4°C. Upon receipt, store at -20°C (short-term) or -80°C (long-term). Avoid repeated freeze.

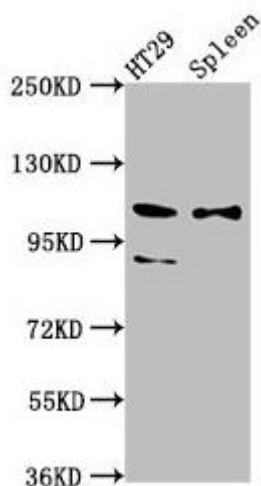
### Alternative Names

Signal peptide, CUB and EGF-like domain-containing protein 2, Protein CEGP1, SCUBE2, CEGP1

### Application

ELISA, WB, IHC; Recommended dilution: WB:1:500-1:5000, IHC:1:200-1:500

---



#### Western Blot

Positive WB detected in: HT29 whole cell lysate, Rat spleen tissue

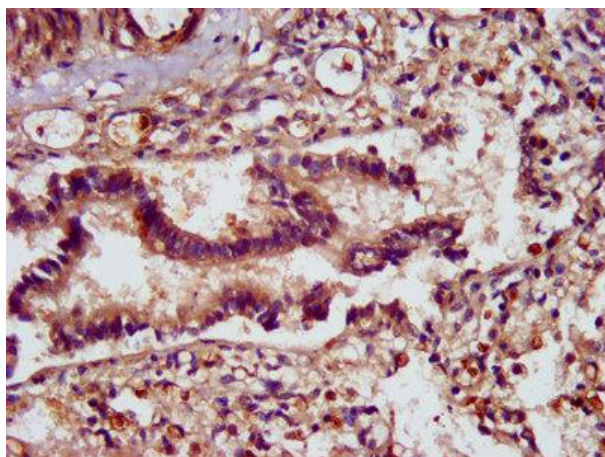
All lanes: SCUBE2 antibody at 8.7ug/ml

Secondary

Goat polyclonal to rabbit IgG at 1/50000 dilution

Predicted band size: 110, 107, 89 kDa

Observed band size: 110, 89 kDa



IHC image of SCUBE2 Antibody diluted at 1:400 and staining in paraffin-embedded human lung tissue performed on a Leica Bond™ system. After dewaxing and hydration, antigen retrieval was mediated by high pressure in a citrate buffer (pH 6.0). Section was blocked with 10% normal goat serum 30min at RT. Then primary antibody (1% BSA) was incubated at 4°C overnight. The primary is detected by a biotinylated secondary antibody and visualized using an HRP conjugated SP system.