

TSPAN9 Polyclonal Antibody

(Catalog # A68739)

Background

focal adhesion, integral component of plasma membrane, plasma membrane, tetraspanin-enriched microdomain, cell surface receptor signaling pathway

Description

TSPAN9 Polyclonal Antibody. Unconjugated. Raised in: Rabbit.

Formulation

0.03% Proclin 300, 50% Glycerol, 0.01M PBS, pH 7.4

Specificity

Human

Isotype

IgG

Uniprot ID

O75954

Purification

Protein G purified

Immunogen

Recombinant Human Tetraspanin-9 protein (107-203AA)

Storage

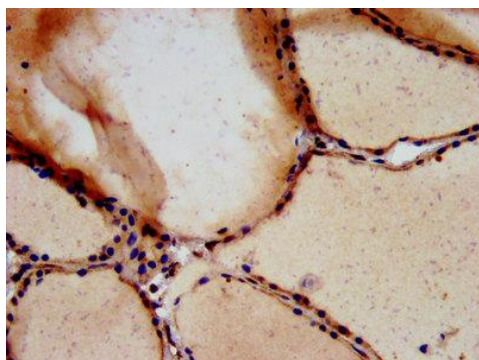
Shipped at 4°C. Upon receipt, store at -20°C (short-term) or -80°C (long-term). Avoid repeated freeze.

Alternative Names

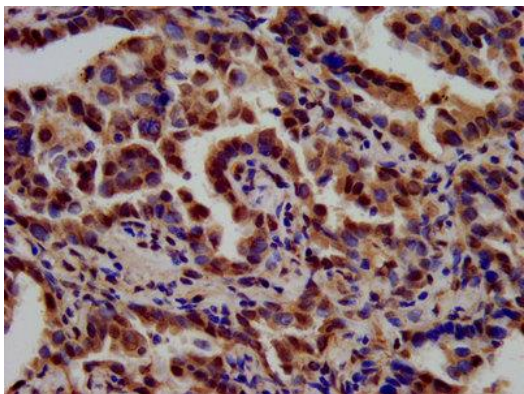
Tetraspanin-9, Tspan-9, Tetraspan NET-5, TSPAN9, NET5

Application

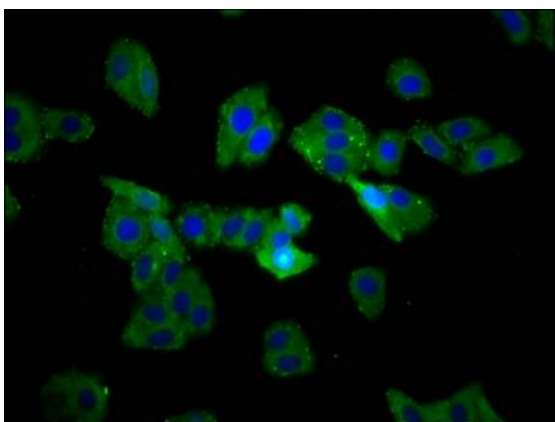
ELISA, IHC, IF; Recommended dilution: IHC:1:500-1:1000, IF:1:200-1:500



IHC image of TSPAN9 Polyclonal Antibody diluted at 1:700 and staining in paraffin-embedded human thyroid tissue performed on a Leica Bond™ system. After dewaxing and hydration, antigen retrieval was mediated by high pressure in a citrate buffer (pH 6.0). Section was blocked with 10% normal goat serum 30min at RT. Then primary antibody (1% BSA) was incubated at 4°C overnight. The primary is detected by a biotinylated secondary antibody and visualized using an HRP conjugated SP system.



IHC image of TSPAN9 Polyclonal Antibody diluted at 1:700 and staining in paraffin-embedded human lung cancer performed on a Leica Bond™ system. After dewaxing and hydration, antigen retrieval was mediated by high pressure in a citrate buffer (pH 6.0). Section was blocked with 10% normal goat serum 30min at RT. Then primary antibody (1% BSA) was incubated at 4°C overnight. The primary is detected by a biotinylated secondary antibody and visualized using an HRP conjugated SP system.



Immunofluorescence staining of HepG2 cells with TSPAN9 Polyclonal Antibody at 1:233, counter-stained with DAPI. The cells were fixed in 4% formaldehyde, permeabilized using 0.2% Triton X-100 and blocked in 10% normal Goat Serum. The cells were then incubated with the antibody overnight at 4°C. The secondary antibody was Alexa Fluor 488-conjugated AffiniPure Goat Anti-Rabbit IgG (H+L).