

ESYT2 Polyclonal Antibody

(Catalog # A68523)

Background

This occurs most likely via the AP-2 complex.

Description

ESYT2 Polyclonal Antibody. Unconjugated. Raised in: Rabbit.

Formulation

Liquid. 0.03% Proclin 300, 50% Glycerol, 0.01M PBS, pH 7.4.

Specificity

Human

Isotype

IgG

Uniprot ID

A0FGR8

Purification

>95%, Protein G purified

Immunogen

Recombinant Human Extended synaptotagmin-2 protein (567-736AA)

Storage

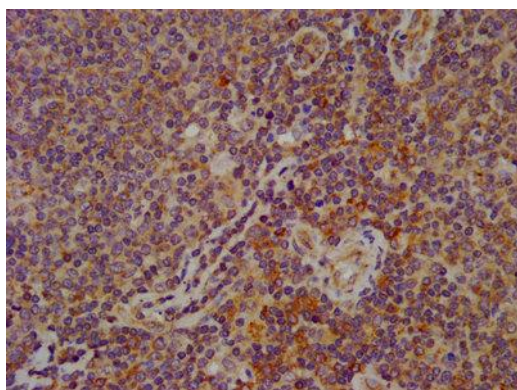
Shipped at 4°C. Upon receipt, store at -20°C (short-term) or -80°C (long-term). Avoid repeated freeze.

Alternative Names

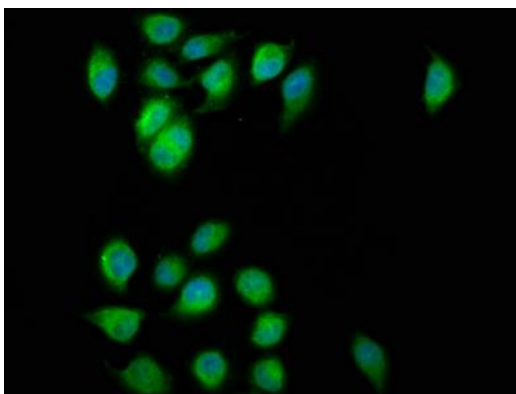
Extended synaptotagmin-2, E-Syt2, Chr2Syt, ESYT2, FAM62B, KIAA1228

Application

ELISA, IHC, IF; Recommended dilution: IHC:1:500-1:1000, IF:1:200-1:500



IHC image of ESYT2 Antibody diluted at 1:600 and staining in paraffin-embedded human lymph node tissue performed on a Leica Bond™ system. After dewaxing and hydration, antigen retrieval was mediated by high pressure in a citrate buffer (pH 6.0). Section was blocked with 10% normal goat serum 30min at RT. Then primary antibody (1% BSA) was incubated at 4°C overnight. The primary is detected by a biotinylated secondary antibody and visualized using an HRP conjugated SP system.



Immunofluorescence staining of A549 cells with ESYT2 Antibody at 1:200, counter-stained with DAPI. The cells were fixed in 4% formaldehyde, permeabilized using 0.2% Triton X-100 and blocked in 10% normal Goat Serum. The cells were then incubated with the antibody overnight at 4°C. The secondary antibody was Alexa Fluor 488-conjugated AffiniPure Goat Anti-Rabbit IgG(H+L).