

CD1E Polyclonal Antibody

(Catalog # A68479)

Background

T-cell surface glycoprotein CD1e, soluble binds diacetylated lipids, including phosphatidyl inositides and diacylated sulfoglycolipids, and is required for the presentation of glycolipid antigens on the cell surface. The membrane-associated form is not active.

Description

CD1E Polyclonal Antibody. Unconjugated. Raised in: Rabbit.

Formulation

Liquid. 0.03% Proclin 300, 50% Glycerol, 0.01M PBS, pH 7.4.

Specificity

Human

Isotype

IgG

Uniprot ID

P15812

Purification

>95%, Protein G purified

Immunogen

Recombinant Human T-cell surface glycoprotein CD1e, membrane-associated protein (198-294AA)

Storage

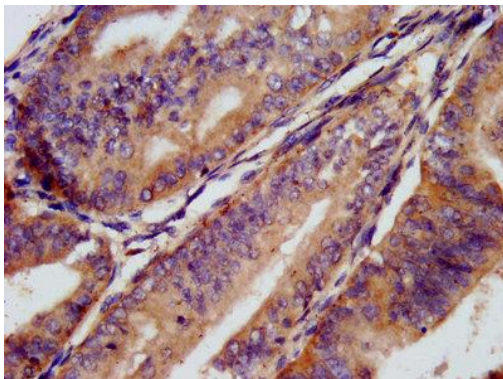
Shipped at 4°C. Upon receipt, store at -20°C (short-term) or -80°C (long-term). Avoid repeated freeze.

Alternative Names

T-cell surface glycoprotein CD1e, membrane-associated, hCD1e, R2G1, CD1e, T-cell surface glycoprotein CD1e, soluble, sCD1e, CD1E

Application

ELISA, IHC; Recommended dilution: IHC: 1:200-1:500



IHC image of CD1E Polyclonal Antibody diluted at 1:300 and staining in paraffin-embedded human endometrial cancer performed on a Leica Bond™ system. After dewaxing and hydration, antigen retrieval was mediated by high pressure in a citrate buffer (pH 6.0). Section was blocked with 10% normal goat serum 30min at RT. Then primary antibody (1% BSA) was incubated at 4°C overnight. The primary is detected by a biotinylated secondary antibody and visualized using an HRP conjugated SP system.