

---

## Histone H4K16me1 (H4K16 Monomethyl) Monoclonal Antibody [RMC429C]

(Catalog # A68416)

---

### Background

Core component of nucleosome. Nucleosomes wrap and compact DNA into chromatin, limiting DNA accessibility to the cellular machineries which require DNA as a template. Histones thereby play a central role in transcription regulation, DNA repair, DNA replication and chromosomal stability. DNA accessibility is regulated via a complex set of post-translational modifications of histones, also called histone code, and nucleosome remodeling.

### Description

Histone H4K16me1 (H4K16 Monomethyl) Monoclonal Antibody [RMC429C]. Unconjugated. Raised in: Rabbit.

### Formulation

Rabbit IgG in phosphate buffered saline, pH 7.4, 150mM NaCl, 0.02% sodium azide and 50% glycerol. .

### Specificity

Human, Rat

### Isotype

IgG

### Uniprot ID

P62805

### Purification

Affinity Purified

### Immunogen

A synthesized peptide

### Storage

Shipped at 4°C. Upon receipt, store at -20°C (short-term) or -80°C (long-term). Avoid repeated freeze.

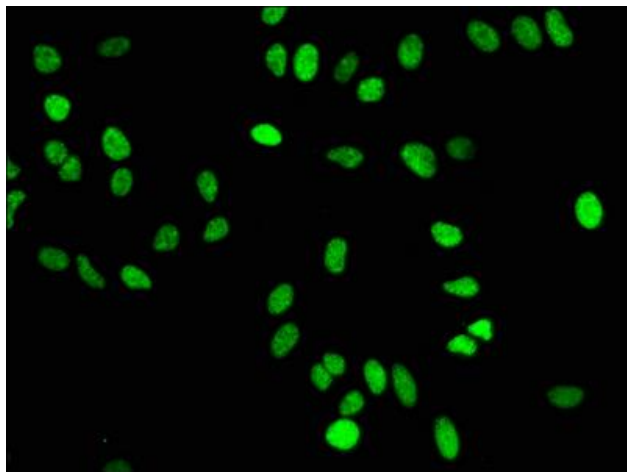
### Alternative Names

Histone H4, HIST1H4A, H4/A, H4FA, AND, HIST1H4B, H4/I, H4FI, AND, HIST1H4C, H4/G, H4FG, AND, HIST1H4D, H4/B, H4FB, AND, HIST1H4E, H4/J, H4FJ, AND, HIST1H4F, H4/C, H4FC, AND, HIST1H4H, H4/H, H4FH, AND, HIST1H4I, H4/M, H4FM, AND, HIST1H4J, H4/E, H4FE, AND, HIST1H4K, H4/D, H4FD, AND, HIST1H4L, H4/K, H4FK, AND, HIST2H4A, H4/N, H4F2, H4FN, HIST2H4, AND, HIST2H4B, H4/O, H4FO, AND, HIST4H4

### Application

ELISA, IF; Recommended dilution: IF:1:30-1:200

---



Immunofluorescence staining of HeLa cells with Histone H4K16me1 (H4K16 Monomethyl) Monoclonal Antibody [RMC429C] at 1:50, counter-stained with DAPI. The cells were fixed in 4% formaldehyde, permeabilized using 0.2% Triton X-100 and blocked in 10% normal Goat Serum. The cells were then incubated with the antibody overnight at 4°C. The secondary antibody was Alexa Fluor 488-conjugated AffiniPure Goat Anti-Rabbit IgG (H+L).