

## Histone H2A Polyclonal Antibody

(Catalog #A68373)

### Description

Histone H2A Polyclonal Antibody. Unconjugated. Raised in: Rabbit.

### Formulation

PBS with 50% glycerol, 0.5% BSA\* and 0.02% sodium azide.

### Specificity

Human, Mouse, Rat

### Isotype

IgG

### Uniprot ID

P0C0S8/P04908/P20671/Q96KK5/Q6FI13/Q7L7L0

### Purification

Affinity Purified

### Immunogen

Synthetic Peptide

### Storage

Shipped at 4°C. Upon delivery aliquot and store at -20°C (short-term) or -80°C (long-term). Avoid repeated freeze.

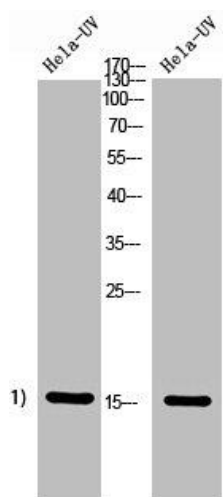
### Alternative Names

HIST1H2AG; H2AFP; HIST1H2AI; H2AFC; HIST1H2AK; H2AFD; HIST1H2AL; H2AFI; HIST1H2AM; H2AFN; Histone H2A type 1; H2A.1; Histone H2A/p; HIST1H2AB; H2AFM; HIST1H2AE; H2AFA; Histone H2A type 1-B/E; Histone H2A.2; Histone H2A/a; Histone H2A/m; HIS

### Application

WB, IHC, ELISA; Recommended dilution: IHC:1:100-1:300, ELISA:1:5000

*\*The BSA is derived from animal or animal-derived material of negligible amounts. The animal-derived material is subject to heat treatment at a temperature higher than 65°C for at least three hours and acid treatment with pH value of less than 5 for at least three hours, thereby being free of Bovine Spongiform Encephalopathy (BSE) and Transmissible Spongiform Encephalopathy (TSE). Additionally, as all BSA-containing products are strictly intended for research purposes and not for diagnostic or therapeutic use, they are not subject to certification authority oversight.*



Western Blot analysis of HeLa+UV 5' cells using Histone H2A Polyclonal Antibody.