

---

## Histone H3K80me1 (H3K80 Monomethyl) Polyclonal Antibody

(Catalog #A68323)

---

### Description

Histone H3K80me1 (H3K80 Monomethyl) Polyclonal Antibody. Unconjugated. Raised in: Rabbit.

### Formulation

PBS with 50% glycerol, 0.5% BSA\* and 0.02% sodium azide.

### Specificity

Human, Mouse, Rat

### Isotype

IgG

### Uniprot ID

P68431/Q71DI3/P84243/Q6NXT2

### Purification

Affinity Purified

### Immunogen

Synthesized peptide derived from Human Histone H3 around the mono-methylation site of K80

### Storage

Shipped at 4°C. Upon delivery aliquot and store at -20°C (short-term) or -80°C (long-term). Avoid repeated freeze.

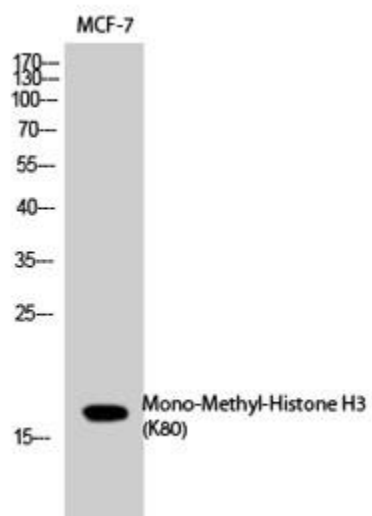
### Alternative Names

HIST1H3A; H3FA; HIST1H3B; H3FL; HIST1H3C; H3FC; HIST1H3D; H3FB; HIST1H3E; H3FD; HIST1H3F; H3FI; HIST1H3G; H3FH; HIST1H3H; H3FK; HIST1H3I; H3FF; HIST1H3J; H3FJ; Histone H3.1

### Application

WB, ELISA; Recommended dilution: WB:1:500-1:2000, ELISA:1:20000

*\*The BSA is derived from animal or animal-derived material of negligible amounts. The animal-derived material is subject to heat treatment at a temperature higher than 65°C for at least three hours and acid treatment with pH value of less than 5 for at least three hours, thereby being free of Bovine Spongiform Encephalopathy (BSE) and Transmissible Spongiform Encephalopathy (TSE). Additionally, as all BSA-containing products are strictly intended for research purposes and not for diagnostic or therapeutic use, they are not subject to certification authority oversight.*



Western Blot analysis of MCF-7 cells using the Histone H3K80me1 (H3K80 Monomethyl) Polyclonal Antibody.