
ELOVL2 Polyclonal Antibody

(Catalog # A67990)

Background

Catalyzes the first and rate-limiting reaction of the four that constitute the long-chain fatty acids elongation cycle. This endoplasmic reticulum-bound enzymatic process, allows the addition of 2 carbons to the chain of long- and very long-chain fatty acids/VLCFAs per cycle. Acts specifically toward polyunsaturated acyl-CoA with the higher activity toward C20:4(n-6) acyl-CoA. Condensing enzyme that catalyzes the synthesis of polyunsaturated very long chain fatty acid (C20- and C22-PUFA). May participate to the production of polyunsaturated VLCFAs of different chain lengths that are involved in multiple biological processes as precursors of membrane lipids and lipid mediators.

Description

ELOVL2 Polyclonal Antibody. Unconjugated. Raised in: Rabbit.

Formulation

Liquid. 0.03% Proclin 300, 50% Glycerol, 0.01M PBS, PH 7.4.

Specificity

Human

Isotype

IgG

Uniprot ID

Q9NXB9

Purification

>95%, Protein G purified

Immunogen

Recombinant Human Elongation of very long chain fatty acids protein 2 protein (91-174AA)

Storage

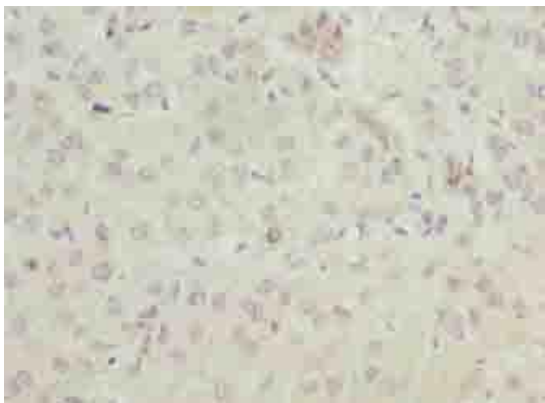
Shipped at 4°C. Upon delivery aliquot and store at -20°C (short-term) or -80°C (long-term). Avoid repeated freeze.

Alternative Names

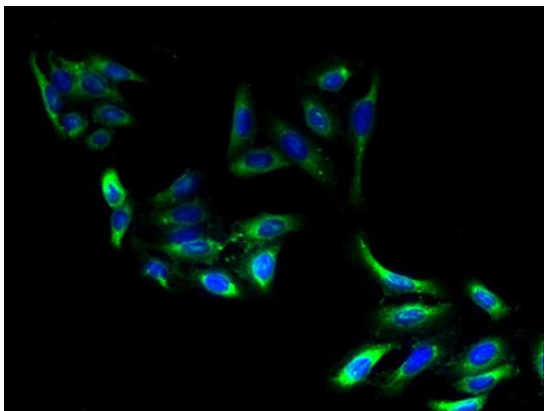
Elongation of very long chain fatty acids protein 2, 3-keto acyl-CoA synthase ELOVL2, ELOVL fatty acid elongase 2, ELOVL FA elongase 2, Very-long-chain 3-oxoacyl-CoA synthase 2, ELOVL2, SSC2

Application

ELISA, IHC, IF; Recommended dilution: IHC:1:20-1:200, IF:1:50-1:200



Immunohistochemistry of paraffin-embedded human liver cancer using ELOVL2 Polyclonal Antibody at dilution of 1:100



Immunofluorescent analysis of HepG2 cells using ELOVL2 Polyclonal Antibody at a dilution of 1:100 and Alexa Fluor 488-conjugated AffiniPure Goat Anti-Rabbit IgG(H+L)