

## FBXO28 Polyclonal Antibody

(Catalog # A67982)

### Background

Probably recognizes and binds to some phosphorylated proteins and promotes their ubiquitination and degradation.

### Description

FBXO28 Polyclonal Antibody. Unconjugated. Raised in: Rabbit.

### Formulation

Liquid. 0.03% Proclin 300, 50% Glycerol, 0.01M PBS, PH 7.4.

### Specificity

Human

### Isotype

IgG

### Uniprot ID

Q9NVF7

### Purification

>95%, Protein G purified

### Immunogen

Recombinant Human F-box only protein 28 protein (251-368AA)

### Storage

Shipped at 4°C. Upon delivery aliquot and store at -20°C (short-term) or -80°C (long-term). Avoid repeated freeze.

### Alternative Names

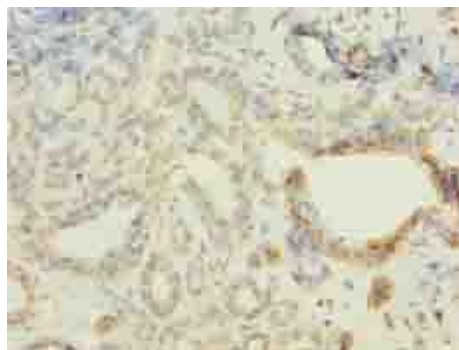
F-box only protein 28, FBXO28, KIAA0483

### Application

ELISA, IHC; Recommended dilution: IHC:1:20-1:200



Immunohistochemistry of paraffin-embedded human kidney tissue using FBXO28 Polyclonal Antibody at dilution of 1:100



Immunohistochemistry of paraffin-embedded human breast cancer tissue using FBXO28 Polyclonal Antibody at dilution of 1:100