

## LRRC4C Polyclonal Antibody

(Catalog # A67970)

### Background

May promote neurite outgrowth of developing thalamic neurons.

### Description

LRRC4C Polyclonal Antibody. Unconjugated. Raised in: Rabbit.

### Formulation

Liquid. 0.03% Proclin 300, 50% Glycerol, 0.01M PBS, PH 7.4.

### Specificity

Human

### Isotype

IgG

### Uniprot ID

Q9HCJ2

### Purification

>95%, Protein G purified

### Immunogen

Recombinant Human Leucine-rich repeat-containing protein 4C protein (201-500AA)

### Storage

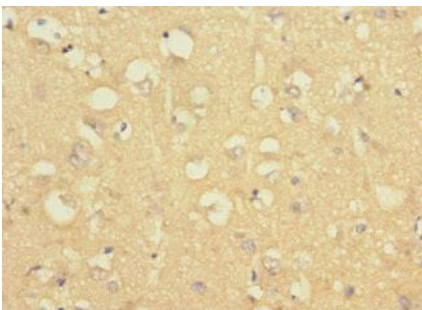
Shipped at 4°C. Upon delivery aliquot and store at -20°C (short-term) or -80°C (long-term). Avoid repeated freeze.

### Alternative Names

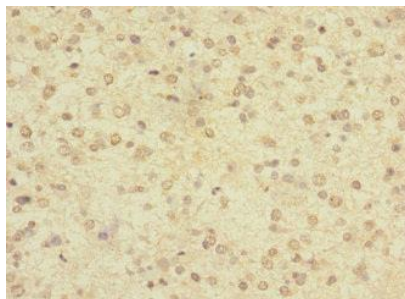
Leucine-rich repeat-containing protein 4C, Netrin-G1 ligand, NGL-1, LRRC4C, KIAA1580, NGL1, UNQ292/PRO331

### Application

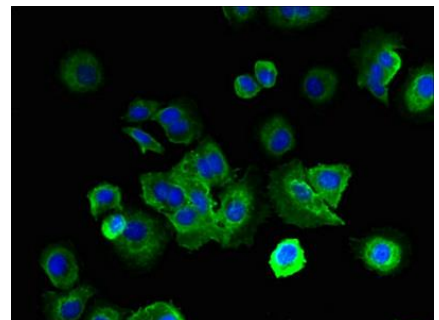
ELISA, IHC, IF; Recommended dilution: IHC:1:20-1:200, IF:1:50-1:200



IHC of paraffin-embedded human brain tissue using LRRC4C Antibody at dilution of 1:100



IHC of paraffin-embedded human glioma using LRRC4C Antibody at dilution of 1:100



IF of MCF-7 cells using LRRC4C Antibody at dilution of 1:100 and Alexa Fluor 488-conjugated AffiniPure Goat Anti-Rabbit IgG(H+L)