

RTP3 Polyclonal Antibody

(Catalog A67902)

Background

cytoplasm, olfactory receptor binding, detection of chemical stimulus involved in sensory perception of bitter taste, protein insertion into membrane, protein targeting to membrane

Description

RTP3 Polyclonal Antibody. Unconjugated. Raised in: Rabbit.

Formulation

0.03% Proclin 300, 50% Glycerol, 0.01M PBS, PH 7.4.

Specificity

Human, Mouse

Isotype

IgG

Uniprot ID

Q9BQQ7

Purification

Protein G purified

Immunogen

Recombinant Human Receptor-transporting protein 3 protein (1-211AA)

Storage

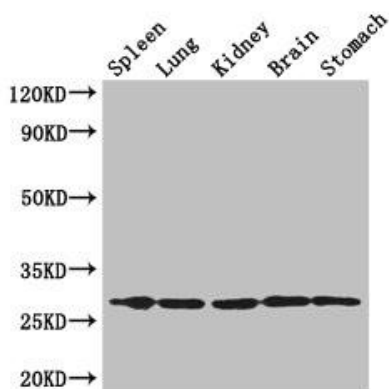
Shipped at 4°C. Upon delivery aliquot and store at -20°C (short-term) or -80°C (long-term). Avoid repeated freeze.

Alternative Names

Receptor-transporting protein 3, 3CxxC-type zinc finger protein 3, Transmembrane protein 7, RTP3, TMEM7, Z3CXXC3

Application

ELISA, WB, IHC, IP; Recommended dilution: WB:1:2000-1:8000, IHC:1:20-1:200, IP:1:200-1:2000



Western Blot

Positive WB detected in: Mouse spleen tissue, Mouse lung tissue, Mouse kidney tissue, Mouse brain tissue, Mouse stomach tissue

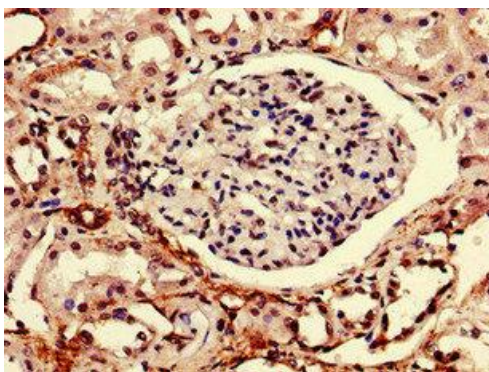
All lanes: RTP3 Polyclonal Antibody at 3ug/ml

Secondary

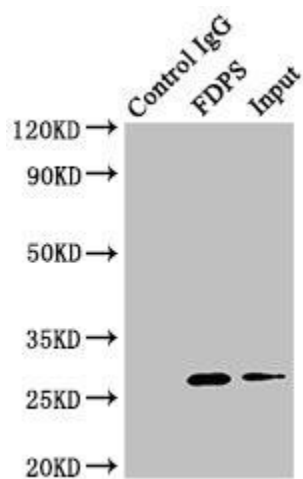
Goat polyclonal to rabbit IgG at 1/50000 dilution

Predicted band size: 28 kDa

Observed band size: 28 kDa



Immunohistochemistry of paraffin-embedded human kidney tissue using RTP3 Polyclonal Antibody at dilution of 1:100



Immunoprecipitating RTP3 in mouse brain tissue

Lane 1: Rabbit control IgG (1 ug) in mouse brain tissue. For western blotting, a HRP-conjugated light chain specific antibody was used as the secondary antibody (1/50000)

Lane 2: RTP3 Polyclonal Antibody (8 ug) + mouse brain tissue (500 ug)

Lane 3: mouse brain tissue (10 ug)