

## CCDC113 Polyclonal Antibody

(Catalog A67682)

### Background

Component of centriolar satellites contributing to primary cilium formation.

### Description

CCDC113 Polyclonal Antibody. Unconjugated. Raised in: Rabbit.

### Formulation

Liquid. 0.03% Proclin 300, 50% Glycerol, 0.01M PBS, PH 7.4.

### Specificity

Human

### Isotype

IgG

### Uniprot ID

Q9H0I3

### Purification

>95%, Protein G purified

### Immunogen

Recombinant Human Coiled-coil domain-containing protein 113 protein (1-200AA)

### Storage

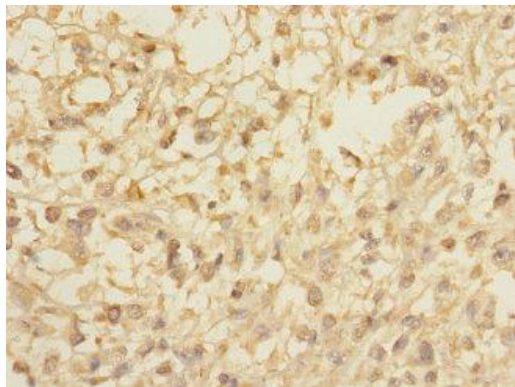
Shipped at 4°C. Upon delivery aliquot and store at -20°C (short-term) or -80°C (long-term). Avoid repeated freeze.

### Alternative Names

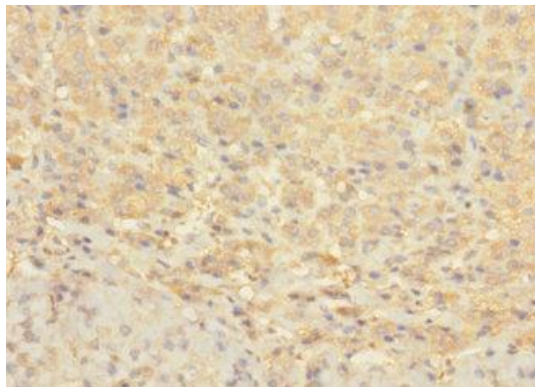
Coiled-coil domain-containing protein 113, CCDC113, HSPC065

### Application

ELISA, IHC; Recommended dilution: IHC:1:20-1:200



Immunohistochemistry of paraffin-embedded human melanoma CCDC113 Polyclonal Antibody at dilution 1:100



Immunohistochemistry of paraffin-embedded human adrenal gland tissue CCDC113 Polyclonal Antibody at dilution 1:100