

---

## NRXN3 Polyclonal Antibody

(Catalog #A67586)

---

### Background

Neuronal cell surface protein that may be involved in cell recognition and cell adhesion. May play a role in angiogenesis.

### Description

NRXN3 Polyclonal Antibody. Unconjugated. Raised in: Rabbit.

### Formulation

Liquid. 0.03% Proclin 300, 50% Glycerol, 0.01M PBS, PH 7.4.

### Specificity

Human, Mouse

### Isotype

IgG

### Uniprot ID

Q9HDB5

### Purification

>95%, Protein G purified

### Immunogen

Recombinant Human Neurexin-3-beta protein (201-432AA)

### Storage

Shipped at 4°C. Upon delivery aliquot and store at -20°C (short-term) or -80°C (long-term). Avoid repeated freeze.

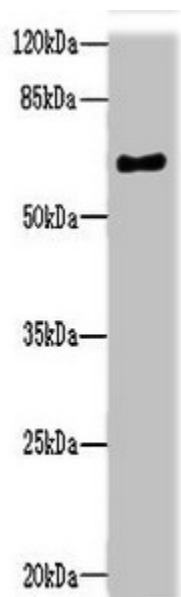
### Alternative Names

Neurexin-3-beta, Neurexin III-beta, NRXN3, KIAA0743

### Application

ELISA, WB; Recommended dilution: WB:1:1000-1:5000

---



Western blot

All lanes: NRXN3 Polyclonal Antibody at 2µg/ml +

Mouse heart tissue

Secondary

Goat polyclonal to rabbit IgG at 1/10000 dilution

Predicted band size: 70, 48, 44, 51 kDa

Observed band size: 70 kDa