

XPR1 Polyclonal Antibody

(Catalog # A67426)

Background

Plays a role in phosphate homeostasis. Mediates phosphate export from the cell (PubMed:25938945). May function in G-protein coupled signal transduction.

Description

XPR1 Polyclonal Antibody. Unconjugated. Raised in: Rabbit.

Formulation

Liquid. 0.03% Proclin 300, 50% Glycerol, 0.01M PBS, PH 7.4.

Specificity

Human

Isotype

IgG

Uniprot ID

Q9UBH6

Purification

>95%, Protein G purified

Immunogen

Recombinant Human Xenotropic and polytropic retrovirus receptor 1 protein (529-696AA)

Storage

Shipped at 4°C. Upon delivery aliquot and store at -20°C (short-term) or -80°C (long-term). Avoid repeated freeze.

Alternative Names

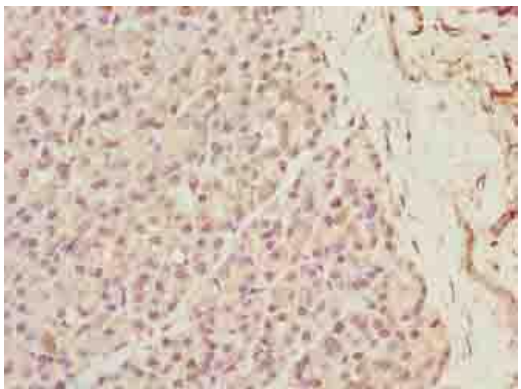
Xenotropic and polytropic retrovirus receptor 1, Protein SYG1 homolog, Xenotropic and polytropic murine leukemia virus receptor X3, X-receptor, XPR1, SYG1, XR

Application

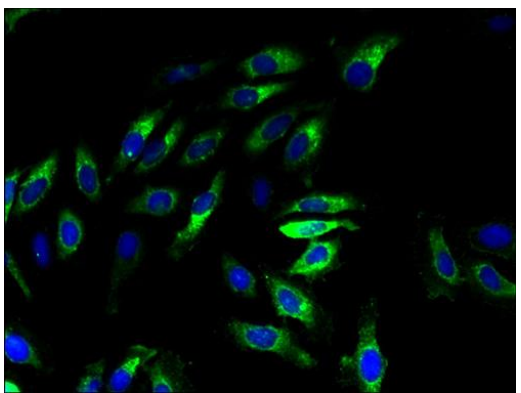
ELISA, IHC, IF; Recommended dilution: IHC:1:20-1:200, IF:1:50-1:200



Immunohistochemistry of paraffin-embedded human skeletal muscle tissue using XPR1 Polyclonal Antibody at dilution of 1:100



Immunohistochemistry of paraffin-embedded human pancreatic tissue using XPR1 Polyclonal Antibody at dilution of 1:100



Immunofluorescent analysis of HeLa cells using XPR1 Polyclonal Antibody at a dilution of 1:100 and Alexa Fluor 488-conjugated AffiniPure Goat Anti-Rabbit IgG(H+L)