

## CXorf21 Polyclonal Antibody

(Catalog #A67386)

### Description

CXorf21 Polyclonal Antibody. Unconjugated. Raised in: Rabbit.

### Formulation

Liquid. 0.03% Proclin 300, 50% Glycerol, 0.01M PBS, PH 7.4.

### Specificity

Human

### Isotype

IgG

### Uniprot ID

Q9HAI6

### Purification

>95%, Protein G purified

### Immunogen

Recombinant Human Uncharacterized protein CXorf21 protein (1-301AA)

### Storage

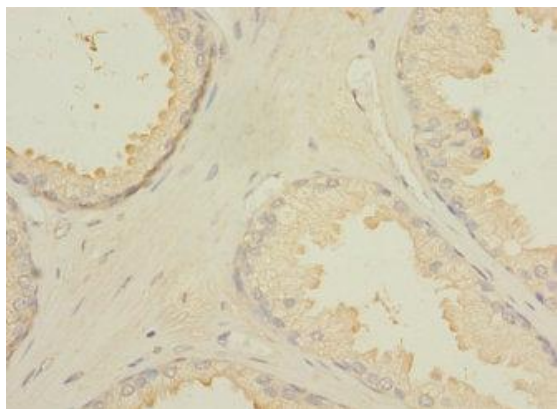
Shipped at 4°C. Upon delivery aliquot and store at -20°C (short-term) or -80°C (long-term). Avoid repeated freeze.

### Alternative Names

Uncharacterized protein CXorf21, CXorf21

### Application

ELISA, IHC; Recommended dilution: IHC:1:20-1:200



Immunohistochemistry of paraffin-embedded human prostate cancer using CXorf21 Polyclonal Antibody at dilution 1:100