
NUP43 Polyclonal Antibody

(Catalog # A66774)

Background

Component of the Nup107-160 subcomplex of the nuclear pore complex (NPC). The Nup107-160 subcomplex is required for the assembly of a functional NPC. The Nup107-160 subcomplex is also required for normal kinetochore microtubule attachment, mitotic progression and chromosome segregation.

Description

NUP43 Polyclonal Antibody. Unconjugated. Raised in: Rabbit.

Formulation

Liquid. 0.03% Proclin 300, 50% Glycerol, 0.01M PBS, PH 7.4.

Specificity

Human

Isotype

IgG

Uniprot ID

Q8NFH3

Purification

>95%, Protein G purified

Immunogen

Recombinant Human Nucleoporin Nup43 protein (1-200AA)

Storage

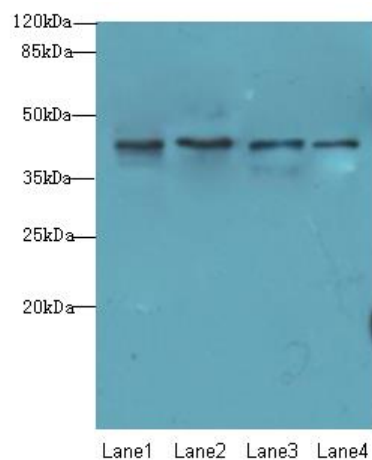
Shipped at 4°C. Upon delivery aliquot and store at -20°C (short-term) or -80°C (long-term). Avoid repeated freeze.

Alternative Names

Nucleoporin Nup43, Nup107-160 subcomplex subunit Nup43, p42, NUP43

Application

ELISA, WB, IHC; Recommended dilution: WB:1:1000-1:5000, IHC:1:20-1:200



Immunohistochemistry of paraffin-embedded human testis tissue using NUP43 Polyclonal Antibody at dilution of 1:100

Western blot

All Lanes: NUP43 Polyclonal Antibody at 4ug/ml

Lane 1: A431 whole cell lysate

Lane 2: HL60 whole cell lysate

Lane 3: Thp-1 whole cell lysate

Lane 4: A549 whole cell lysate

Secondary

Goat polyclonal to Rabbit IgG at 1/10000 dilution

Predicted band size: 42 kDa

Observed band size: 42 kDa Observed band size: 76, 70 kDa