

SETD9 Polyclonal Antibody

(Catalog # A66518)

Description

SETD9 Polyclonal Antibody. Unconjugated. Raised in: Rabbit.

Formulation

Liquid. 0.03% Proclin 300, 50% Glycerol, 0.01M PBS, PH 7.4.

Specificity

Human

Isotype

IgG

Uniprot ID

Q8NE22

Purification

>95%, Protein G purified

Immunogen

Recombinant Human SET domain-containing protein 9 protein (1-299AA)

Storage

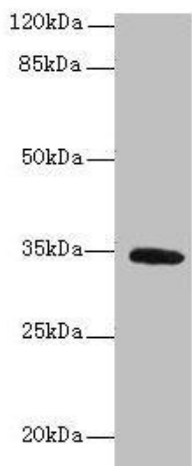
Shipped at 4°C. Upon delivery aliquot and store at -20°C (short-term) or -80°C (long-term). Avoid repeated freeze.

Alternative Names

SET domain-containing protein 9, SETD9, C5orf35

Application

ELISA, WB; Recommended dilution: WB:1:1000-1:5000



Western blot

All lanes: SETD9 Polyclonal Antibody at 6ug/ml+K562 whole cell lysate

Goat polyclonal to rabbit at 1/10000 dilution

Predicted band size: 34 kDa

Observed band size: 34 kDa