
SERPINB12 Polyclonal Antibody

(Catalog #A66318)

Background

Inhibits trypsin and plasmin, but not thrombin, coagulation factor Xa, or urokinase-type plasminogen activator.

Description

SERPINB12 Polyclonal Antibody. Unconjugated. Raised in: Rabbit.

Formulation

Liquid. 0.03% Proclin 300, 50% Glycerol, 0.01M PBS, PH 7.4.

Specificity

Human

Isotype

IgG

Uniprot ID

Q96P63

Purification

>95%, Protein G purified

Immunogen

Recombinant Human Serpin B12 protein (1-300AA)

Storage

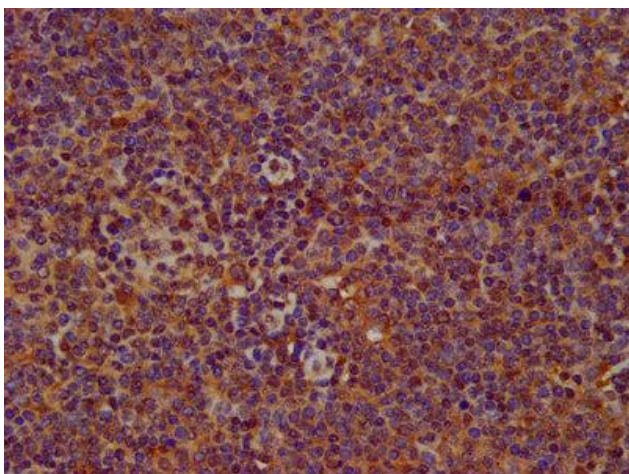
Shipped at 4°C. Upon delivery aliquot and store at -20°C (short-term) or -80°C (long-term). Avoid repeated freeze.

Alternative Names

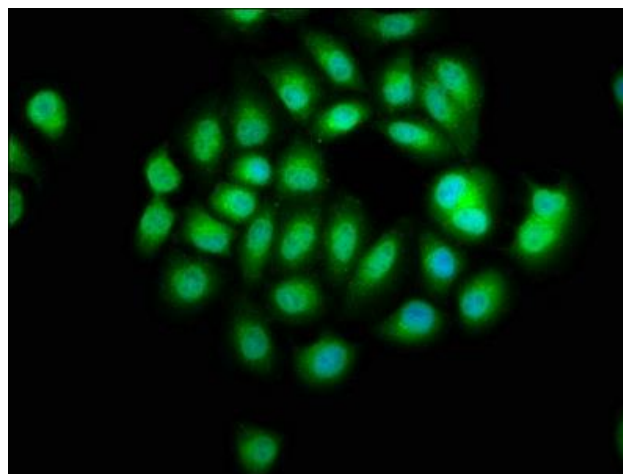
Serpin B12, SERPINB12

Application

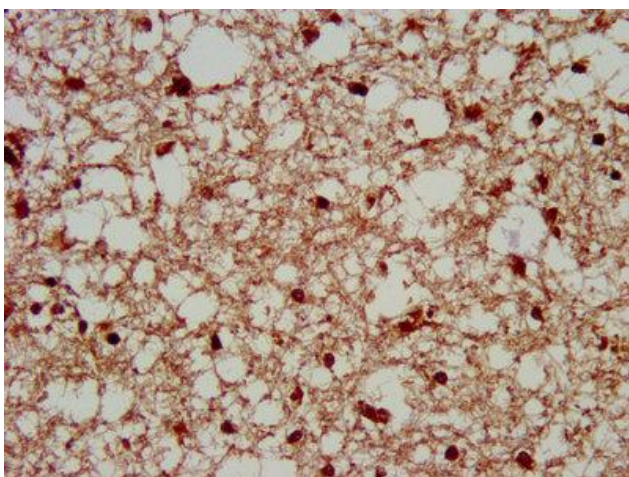
ELISA, IHC, IF; Recommended dilution: IHC:1:200-1:500, IF:1:50-1:200



IHC image of SERPINB12 Polyclonal Antibody diluted at 1:200 and staining in paraffin-embedded human lymph node tissue performed on a Leica Bond™ system. After dewaxing and hydration, antigen retrieval was mediated by high pressure in a citrate buffer (pH 6.0). Section was blocked with 10% normal goat serum 30min at RT. Then primary antibody (1% BSA) was incubated at 4°C overnight. The primary is detected by a biotinylated secondary antibody and visualized using an HRP conjugated SP system.



Immunofluorescence staining of A549 cells with SERPINB12 Polyclonal Antibody at 1:66, counter-stained with DAPI. The cells were fixed in 4% formaldehyde, permeabilized using 0.2% Triton X-100 and blocked in 10% normal Goat Serum. The cells were then incubated with the antibody overnight at 4°C. The secondary antibody was Alexa Fluor 488-conjugated AffiniPure Goat Anti-Rabbit IgG(H+L).



IHC image of SERPINB12 Polyclonal Antibody diluted at 1:200 and staining in paraffin-embedded human brain tissue performed on a Leica Bond™ system. After dewaxing and hydration, antigen retrieval was mediated by high pressure in a citrate buffer (pH 6.0). Section was blocked with 10% normal goat serum 30min at RT. Then primary antibody (1% BSA) was incubated at 4°C overnight. The primary is detected by a biotinylated secondary antibody and visualized using an HRP conjugated SP system.