

MS4A4A Polyclonal Antibody

(Catalog # A66310)

Background

May be involved in signal transduction as a component of a multimeric receptor complex.

Description

MS4A4A Polyclonal Antibody. Unconjugated. Raised in: Rabbit.

Formulation

Liquid. 0.03% Proclin 300, 50% Glycerol, 0.01M PBS, PH 7.4.

Specificity

Human

Isotype

IgG

Uniprot ID

Q96JQ5

Purification

>95%, Protein G purified

Immunogen

Recombinant Human Membrane-spanning 4-domains subfamily A member 4A protein (1-64AA)

Storage

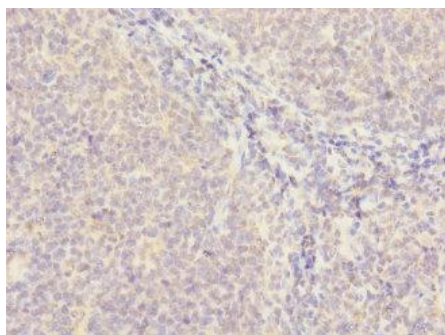
Shipped at 4°C. Upon delivery aliquot and store at -20°C (short-term) or -80°C (long-term). Avoid repeated freeze.

Alternative Names

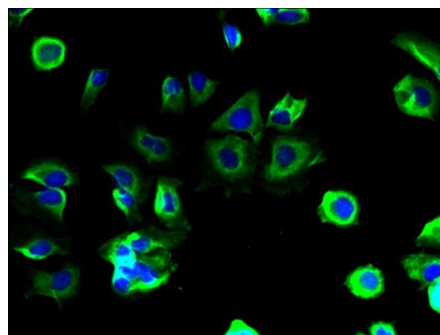
Membrane-spanning 4-domains subfamily A member 4A, CD20 antigen-like 1, Four-span transmembrane protein 1, MS4A4A, 4SPAN1, CD20L1, MS4A4, HDCME31P

Application

ELISA, IHC, IF; Recommended dilution: IHC:1:20-1:200, IF:1:50-1:200



Immunohistochemistry of paraffin-embedded human tonsil tissue MS4A4A Polyclonal Antibody at dilution 1:100



Immunofluorescent analysis of MCF-7 cells using MS4A4A Polyclonal Antibody at a dilution of 1:100 and Alexa Fluor 488-conjugated AffiniPure Goat Anti-Rabbit IgG(H+L)