

LRRC15 Polyclonal Antibody

(Catalog # A66246)

Background

extracellular exosome, collagen binding, fibronectin binding, laminin binding, negative regulation of establishment of protein localization to plasma membrane, positive regulation of cell migration, receptor-mediated virion attachment to host cell

Description

LRRC15 Polyclonal Antibody. Unconjugated. Raised in: Rabbit.

Formulation

Liquid. 0.03% Proclin 300, 50% Glycerol, 0.01M PBS, PH 7.4.

Specificity

Human

Isotype

IgG

Uniprot ID

Q8TF66

Purification

>95%, Protein G purified

Immunogen

Recombinant Human Leucine-rich repeat-containing protein 15 protein (301-538AA)

Storage

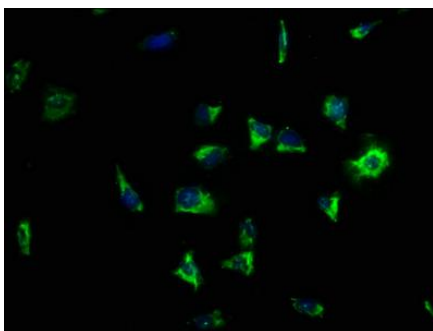
Shipped at 4°C. Upon delivery aliquot and store at -20°C (short-term) or -80°C (long-term). Avoid repeated freeze.

Alternative Names

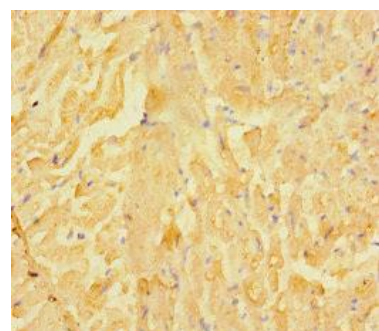
Leucine-rich repeat-containing protein 15, Leucine-rich repeat protein induced by beta-amyloid homolog, hLib, LRRC15, LIB

Application

ELISA, IHC, IF; Recommended dilution: IHC:1:20-1:200, IF:1:50-1:200



IF staining of SH-SY5Y cells with LRRC15 Antibody at 1:133, counter-stained with DAPI. The cells were fixed in 4% formaldehyde, permeabilized using 0.2% Triton X-100 and blocked in 10% normal Goat Serum. The cells were then incubated with the antibody overnight at 4°C. The secondary antibody was Alexa Fluor 488-conjugated AffiniPure Goat Anti-Rabbit IgG(H+L).



IHC of paraffin-embedded human heart tissue using LRRC15 Antibody at dilution of 1:100