

## SLC38A6 Polyclonal Antibody

(Catalog # A66182)

---

### Background

Probable sodium-dependent amino acid/proton antiporter, could be a neuronal transporter for glutamate.

### Description

SLC38A6 Polyclonal Antibody. Unconjugated. Raised in: Rabbit.

### Formulation

Liquid. 0.03% Proclin 300, 50% Glycerol, 0.01M PBS, PH 7.4.

### Specificity

Human, Mouse

### Isotype

IgG

### Uniprot ID

Q8IZM9

### Purification

>95%, Protein G purified

### Immunogen

Recombinant Human Probable sodium-coupled neutral amino acid transporter 6 protein (132-169AA)

### Storage

Shipped at 4°C. Upon delivery aliquot and store at -20°C (short-term) or -80°C (long-term). Avoid repeated freeze.

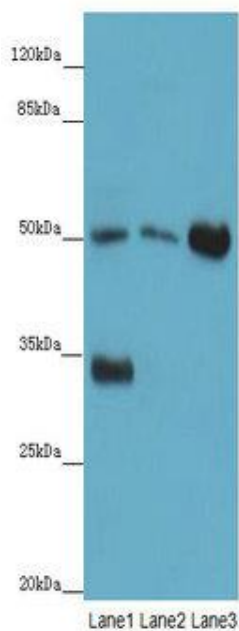
### Alternative Names

Probable sodium-coupled neutral amino acid transporter 6, N-system amino acid transporter 1, NAT-1, Na(+)-coupled neutral amino acid transporter 6, Solute carrier family 38 member 6, SLC38A6, NAT1, SNAT6

### Application

ELISA, WB, IF; Recommended dilution: WB:1:1000-1:5000, IF:1:50-1:200

---



#### Western blot

All lanes: SLC38A6 Polyclonal Antibody at 12 ug/ml

Lane 1: Mouse kidney tissue

Lane 2: Mouse thymus tissue

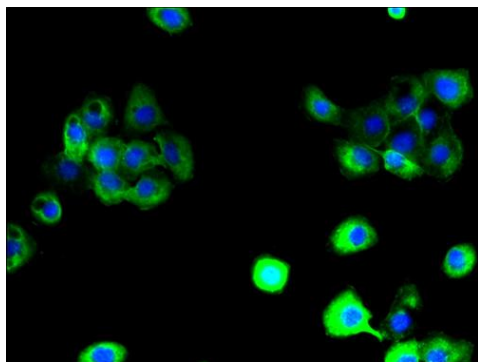
Lane 3: U87 whole cell lysate

Secondary

Goat polyclonal to Rabbit IgG at 1/10000 dilution

Predicted band size: 51 kDa

Observed band size: 51,33 kDa.



Immunofluorescent analysis of A431 cells using SLC38A6 Polyclonal Antibody at a dilution of 1:100 and Alexa Fluor 488-conjugated AffiniPure Goat Anti-Rabbit IgG(H+L)